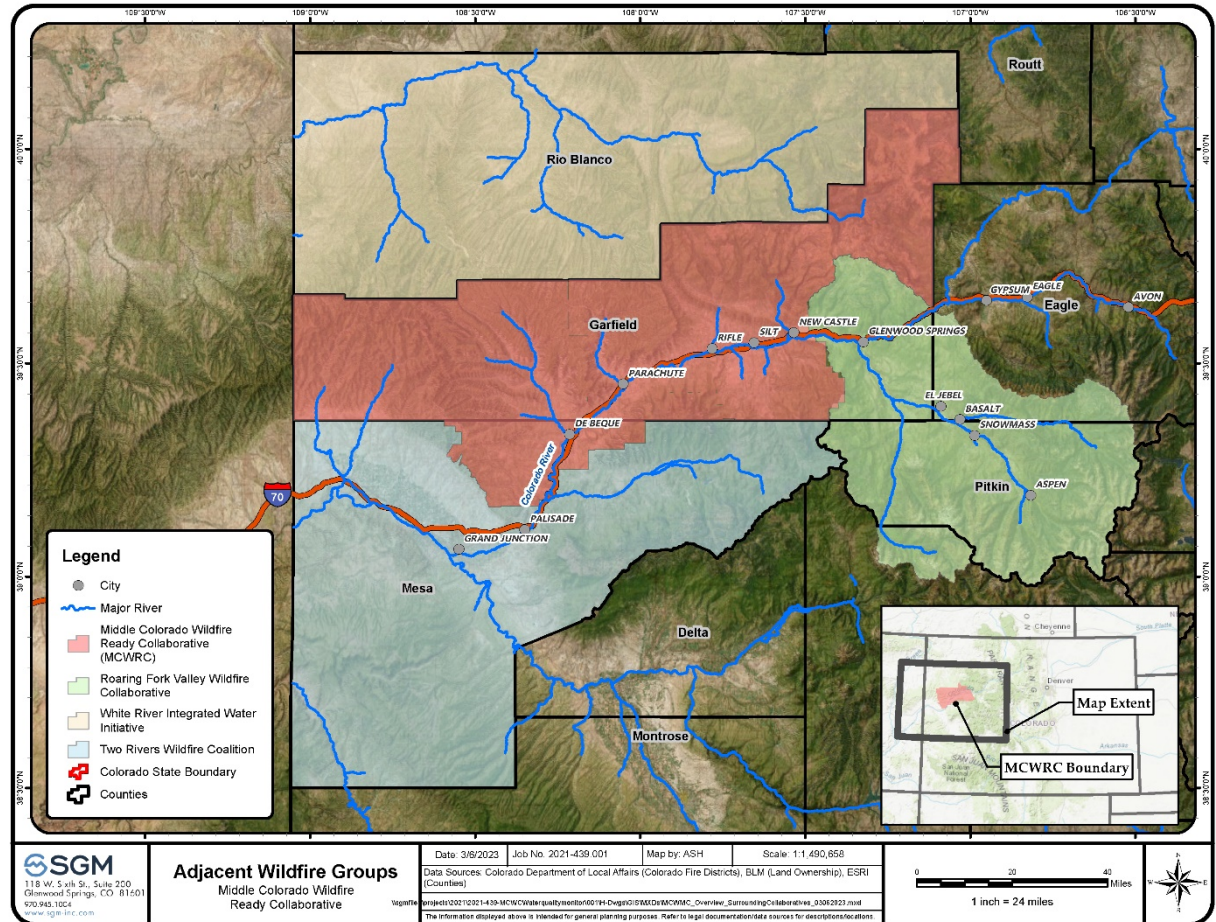


Wildfire Ready Collaboratives On The Roaring Fork and Colorado Rivers



MCWC

Middle Colorado
Watershed Council



Middle Colorado State of the River 05.02.2023

Lessons Learned



- Public or private land
- Cross jurisdictional impact to values at risk during fire
- Funding availability
- Liability during fire and with restoration post fire



**Habitat
Improvement**

=

Fire Mitigation

=

**Watershed
Protection**

Roaring Fork Valley Wildfire Collaborative

*Initiated Fall 2021

*Led by coalition of US Forest Service, Bureau of Land Management, Colorado State Forestry, Local Fire Districts, Municipalities and Counties

*Supported through engagement of impacted stakeholders in the Roaring Fork Valley

Colorado River Wildfire Collaborative

*Using Roaring Fork and Eagle County format, initiated Fall 2022

*Led by coalition of US Forest Service, Bureau of Land Management, Colorado State Forestry, Local Fire Districts, Municipalities and Counties

*Supported through engagement of impacted stakeholders along the Middle Colorado River

Collaboratives Overlap

Roaring Fork

Aspen, Snowmass Village, Basalt, Marble, Carbondale, **Glenwood Springs**, Pitkin County, Eagle County, **Garfield County**, Gunnison County, Aspen Institute, Colorado Timber Industry Association, Aspen Fire District, Roaring Fork Fire & Rescue, Carbondale & Rural Fire Protection District, **Glenwood Springs Fire District, USFS, BLM, Colorado State Forestry, CPW, CDFPC, Colorado Fire Commissioner, National Forest Foundation, Fire Adapted Colorado, Colorado Division Reclamation, Mining and Safety, Aspen Valley Land Trust, Wilderness Workshop, Aspen Skiing Company, Sunlight Ski Area, Holy Cross Cattlemen's Association, Water Biodiversity Initiative, Middle Colorado Watershed Council, Roaring Fork Conservancy, Mt Sopris Conservation District, Holy Cross Energy, 10th Mountain Huts, Tri Color Radio, Ruedi Water and Power, Colorado Springs Utilities, Aspen Center Environmental Studies, Aspen Institute**

Colorado River

Rifle, New Castle, Silt, De Beque, Parachute, **Glenwood Springs**, Mesa County, **Garfield County**, Garfield County Emergency Management, Mesa County Emergency Management, De Beque Fire Protection District, Plateau Valley Fire Protection District, Grand Valley, Fire Protection District, Colorado River Fire Rescue District, Lower Valley Fire Protection District, **Glenwood Springs Fire Protection District, USFS, BLM, Colorado State Forestry, CPW, CDFPC, Colorado Fire Commission, National Forest Foundation, Fire Adapted Colorado, Colorado Division Reclamation, Mining and Safety, Aspen Valley Land Trust, Roaring Fork Outdoor Volunteers, Silt Water Conservancy District, Terra Energy Partners, Holy Cross Cattlemen's Association, West Elk Creek Land Owners, Middle Colorado Watershed Council, Xcel Energy, Holy Cross Energy**: Future: Battlement Mesa Metro District, Collbran.

Goals: Develop *Wildfire Ready Action Plan* with Watershed Stakeholders

- Develop a collaborative that can plan and complete projects to reduce wildfire impacts and post-fire challenges.
- Share experiences – serve as the foundation for moving forward together.
- Scheduling monthly meetings to coordinate projects and mitigation efforts.
- Pursue project funding through state and federal resources



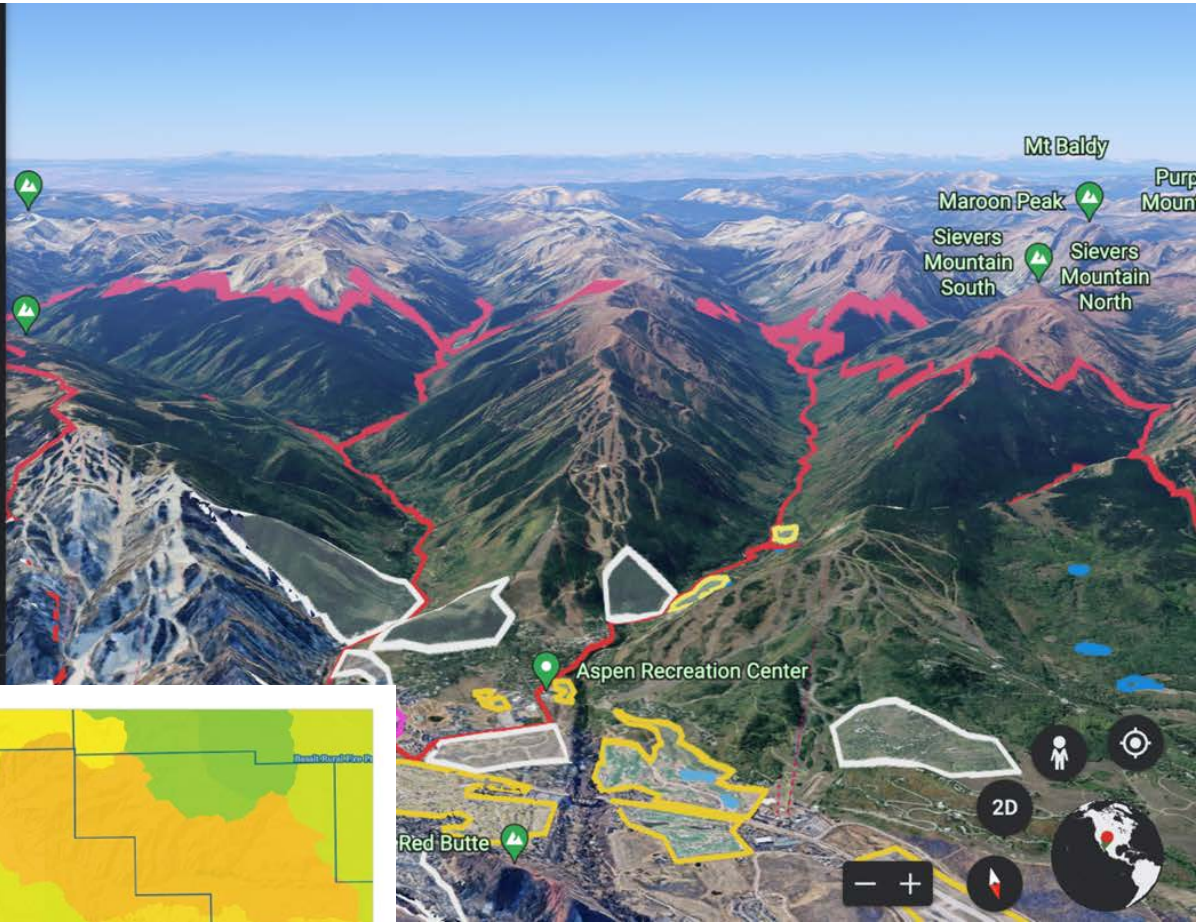
←

AFPD PODS Map

holding features - RED
 water sources - BLUE
 past and future treatment areas - ORANGE
 safety zones - YELLOW
 Staging areas - PURPLE
 Landing zones/ heli spots - GREEN
 Known HAZMAT area - BLACK
 Utilities/ Critical infrastructure - PINK
 areas of opportunity -- White

Ali Hager
 Auto-saved seconds ago

New feature ▾ **Present**



Colorado Risk Reduction Planner

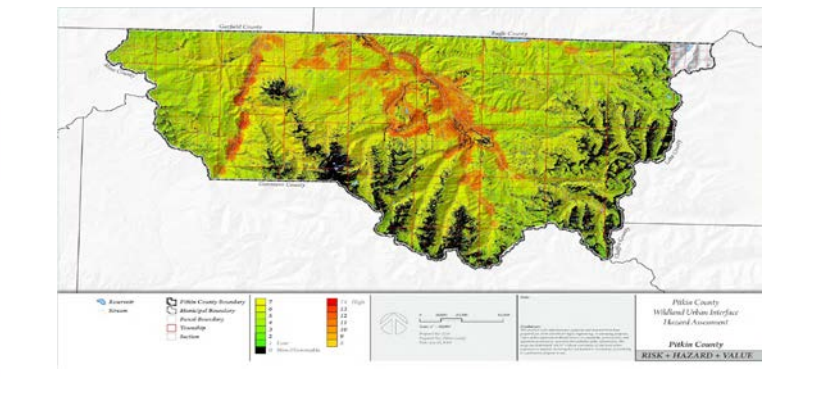
<https://co-pro.coloradoforestlas.org>

AFPD Forest Action Plan Composite

Represents priority areas where goals from the forest conditions, living with wildfire, and watershed protection themes can be achieved on the same management footprint by a project or activity.

Created on:
3/31/2023, 3:53 PM

Disclaimer
 The user assumes the entire risk related to their use of the Colorado Midstate Risk Public Viewer and other the published or derived products from these data.
 The Colorado State Forest Service is providing these data "as is" and disclaims any and all warranties, whether expressed or implied, including without limitation any implied warranties of merchantability or fitness for a particular purpose.
 In no event will Colorado State Forest Service be liable to you or to any third party for any direct, indirect, incidental, consequential, special or exemplary damages or lost profit resulting from any use or misuse of these data.



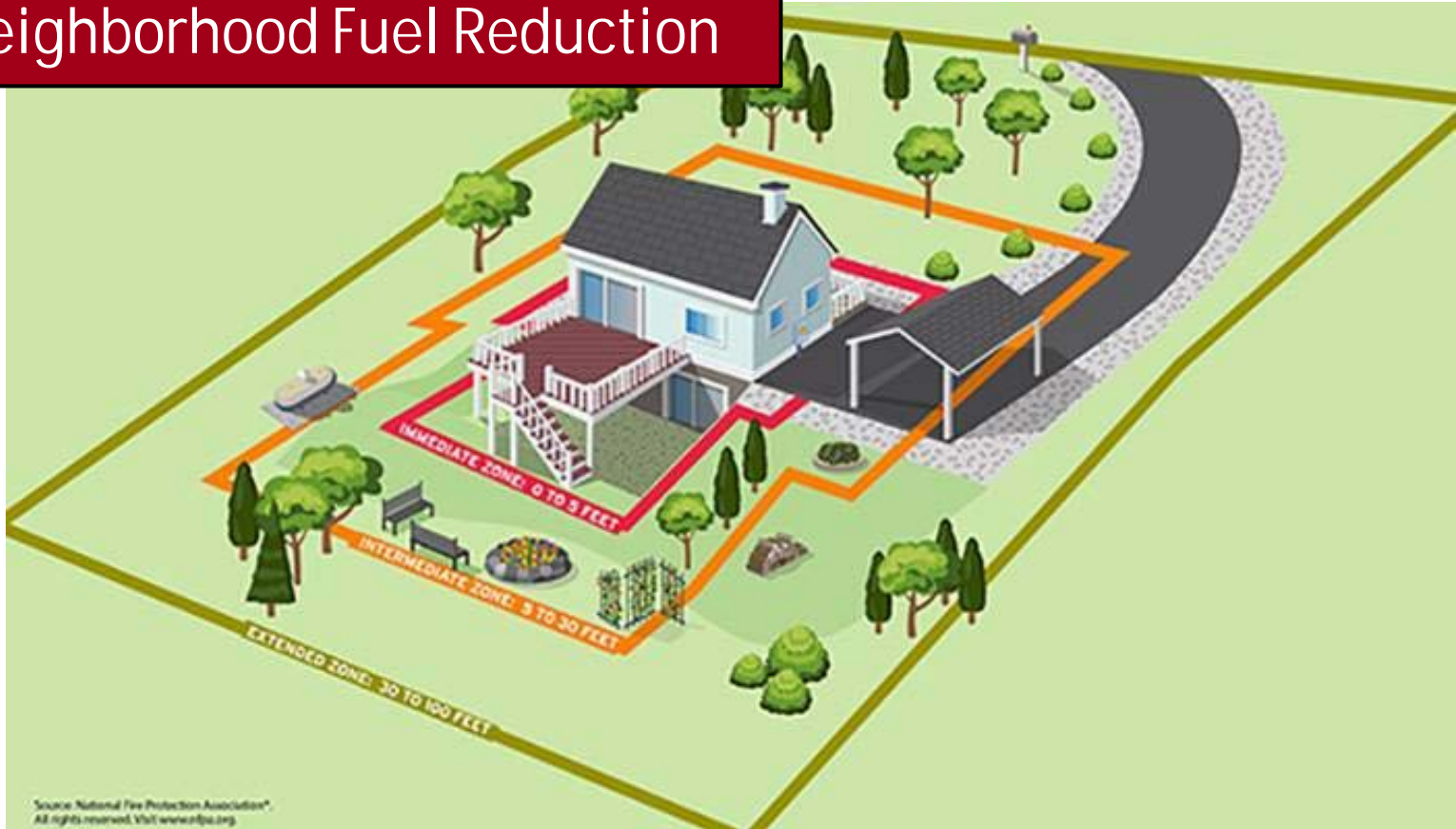
Community resilience means living with fire and proactively reducing its destructive consequences.



Long Mesa Fire, 2002

Outreach and Education

Neighborhood Fuel Reduction



Focus

- ▣ Form subcommittees
- ▣ Map values at risk for each stakeholder
- ▣ Document the history of efforts
- ▣ Plan for mitigation projects
- ▣ Develop Wildfire Ready Action Plan
- ▣ Find funding
- ▣ Develop an MOU between stakeholders



Community Collaboration

- Wildfires do not recognize jurisdictional lines.
- The Collaborative consists of local, county, state and federal agencies involved in wildfire mitigation and management along with land owner associations, businesses and non-profits.
- The collaborative will identify, prioritize and implement wildfire mitigation work on a landscape scale across jurisdictional boundaries to create fire resilient communities.
- Working together through the collaborative improves communication and coordination and provides better leverage for outside grants and funding.
- Community engagement and inclusion is a priority for the collaborative to empower all people to take action to reduce wildfire risk in their communities, to protect people, property, and places from wildfire loss.
- The agencies involved will develop an MOU to establish the group as an informal, unincorporated collaborative organization in which the members set mutual goals and priorities and align decisions about where to make the investments needed to most effectively mitigate wildfire risk.
- The MOU recognizes the differences in missions, goals, and objectives of the various organizations while identifying a set of common goals.

Contact Information

Middle Colorado Watershed Council

Paula Stepp

Executive Director

pstepp@midcowatershed.org

970-404-0162

Roaring Fork Valley Wildfire
Collaborative

Ali Hager Hammond

Rick Balentine

ali.hammond@aspensfire.com

Please visit our website: www.midcowatershed.org

Follow us on social media: [@midcowatershed](https://www.instagram.com/midcowatershed)