

## Rio Blanco Water Conservancy District – Update

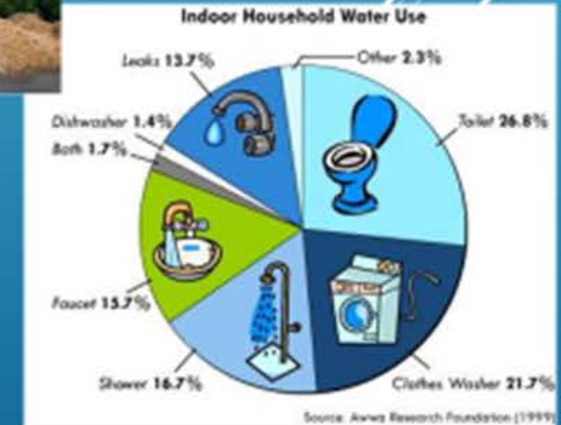
### April 13, 2022

*THE RBWCD's mission is to conserve and develop land and water resources for the best use of water within the RBWCD boundaries.*

# Rural Water

## Purpose of Rural Water:

“Provide reliable high-quality potable water supply & service to property, individuals, & businesses not presently served by a public water supply.”

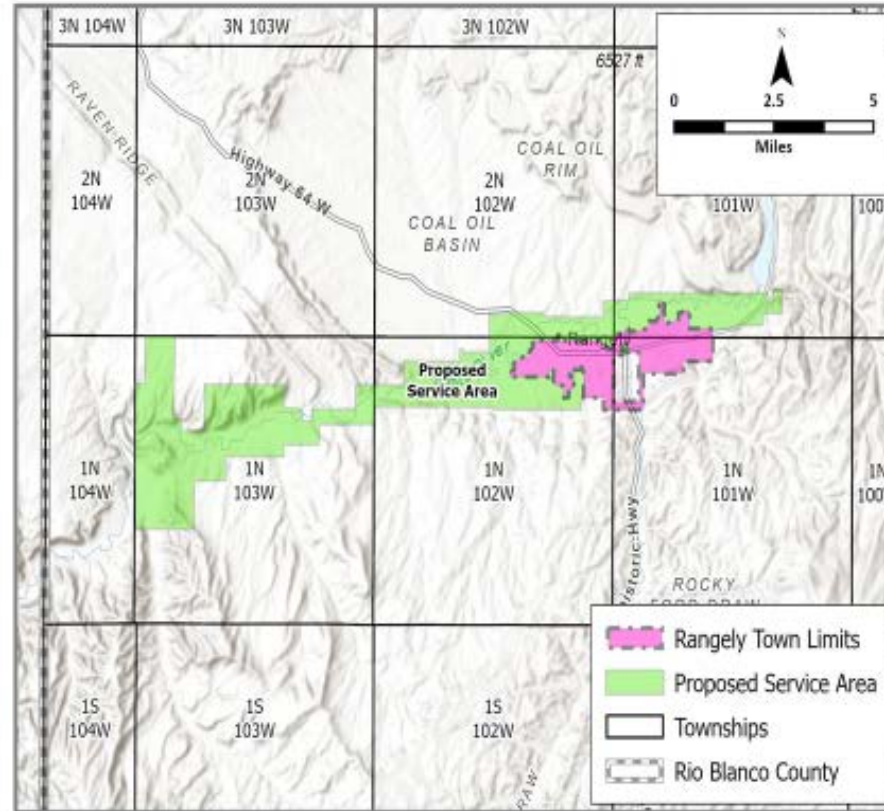




# What's New?



- Colorado Housing and Finance Authority Grant of \$50,000
- Proposed pipeline route
- Income Survey
- Environmental Assessment
- Town of Rangely
- Rio Blanco County
- USDA/Rural Development
- RBWCD



## PROPOSED SERVICE AREA

~  
**AREAS OUTLAYING OF  
RANGELY NOT PRESENTLY  
SERVED BY THE TOWN OF  
RANGELY**



## Cost:

- Project Cost = \$ 2,982,000
- Estimated Monthly Water Bill \$142.52 w/45% grant (8,000 gallons/month usage)

## Financing + Financing Options:

- Membership & User Fees
- RBWCD Rural Water Enterprise
- Grants (*local, state, federal*)
- Loans (*state & federal*)



Yampa-White-Green  
Basin Roundtable



**COLORADO**  
Colorado Water  
Conservation Board  
Department of Natural Resources





# Taylor Draw Dam/Kenney Reservoir

Decreed uses - Manufacturing, irrigation, domestic, municipal, stock watering, piscatorial, & hydro-power

## 1985

13,800 AF

615 Acres

2,500 visitor days/yr

12.090 MW

## Present

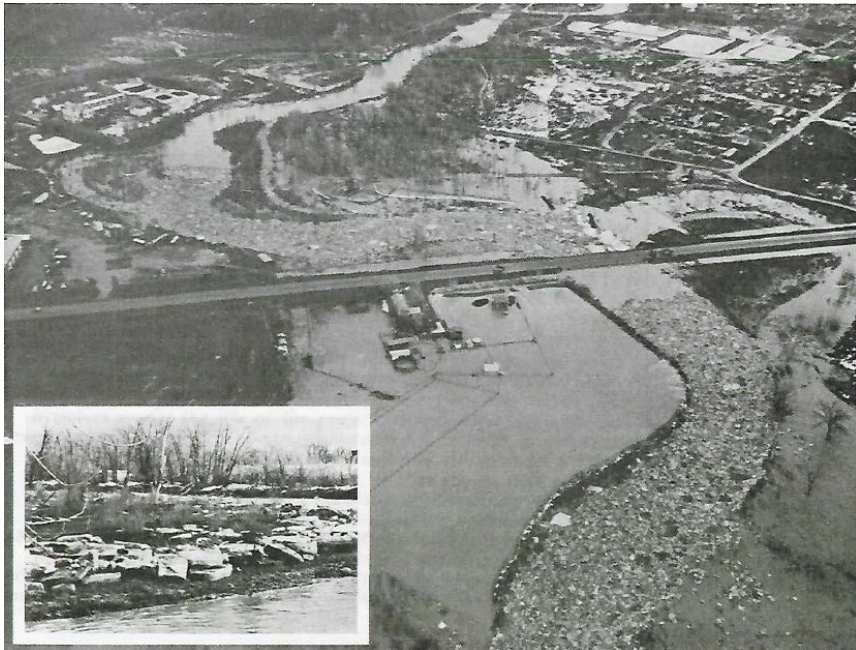
2,245 AF

264 acres

5,000 + days/yr

10.622 MW

## Taylor Draw Dam & Hydro 100% Locally funded

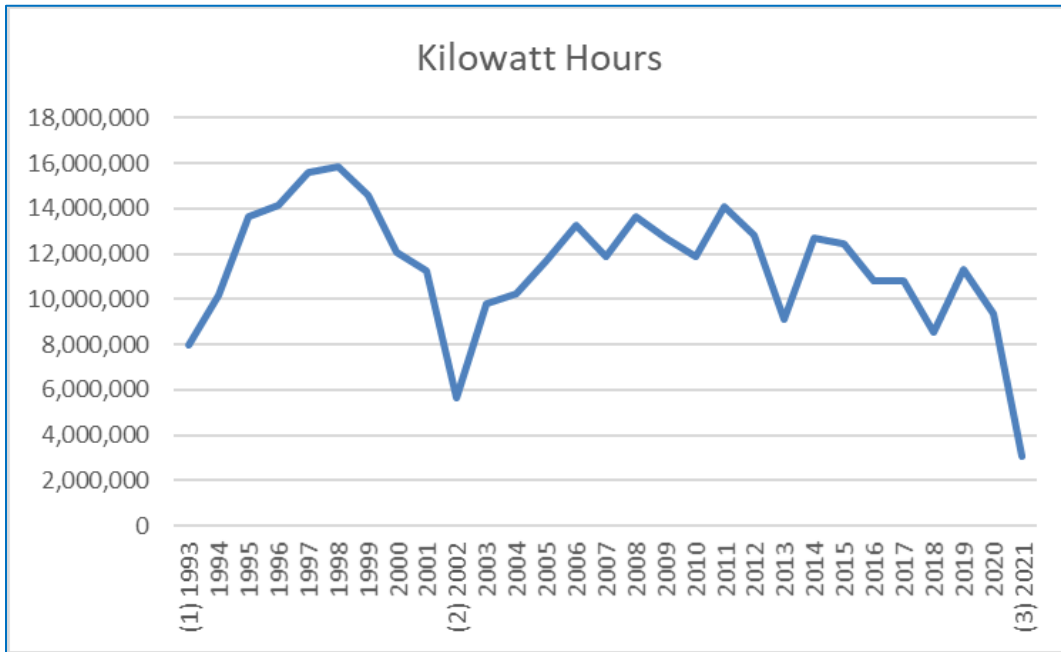


*\* 315 AF/yr average loss to sediment*





# Taylor Draw Hydroelectric

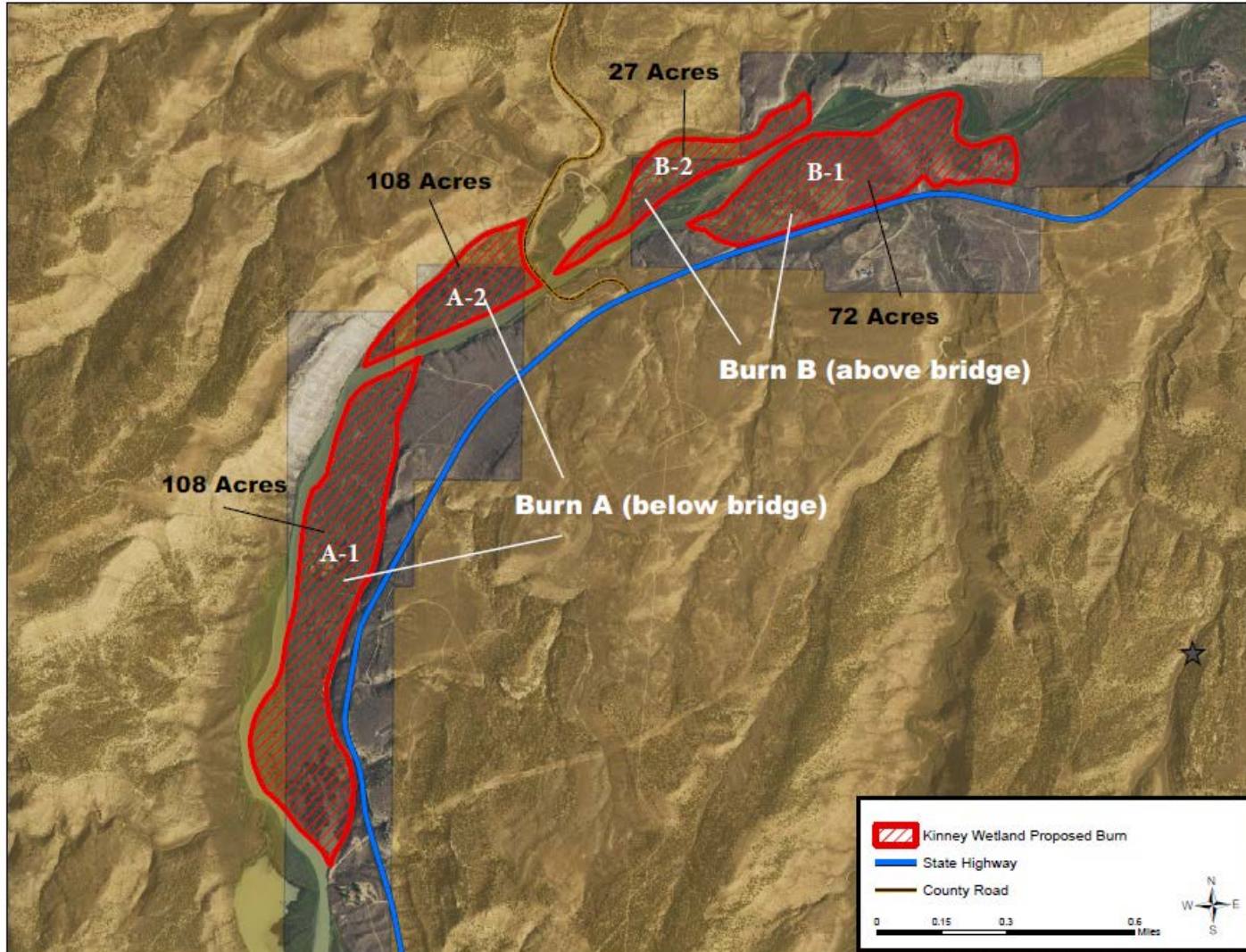


- 2-megawatt capacity
- 100% locally funded
- Renewable energy for approximately 1,200 homes at full capacity
- Helps maintain low electric rates
- Cooperator with MLEA & Deseret Generation & Transmission Cooperative





# Kenney Reservoir Prescribed Burn Plan



**COLORADO**

**Division of Fire  
Prevention & Control**

Department of Public Safety

## Objectives

- Fuels Reduction
- Water Quality & Quantity
- Wildlife
- Riparian Health
- Invasive species control

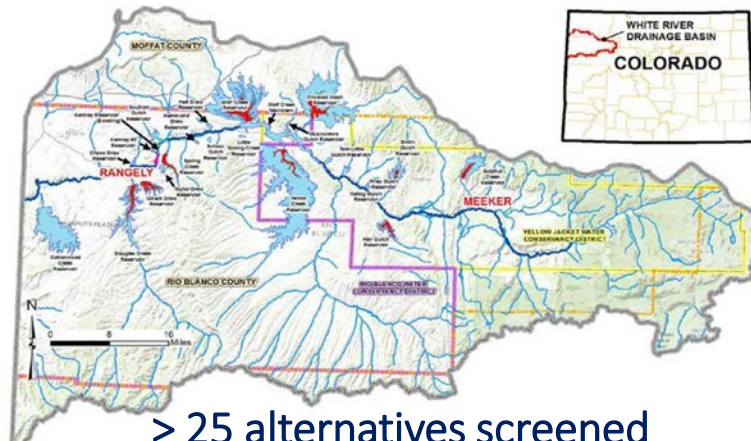




# WR Water Supply Planning & What We've Learned

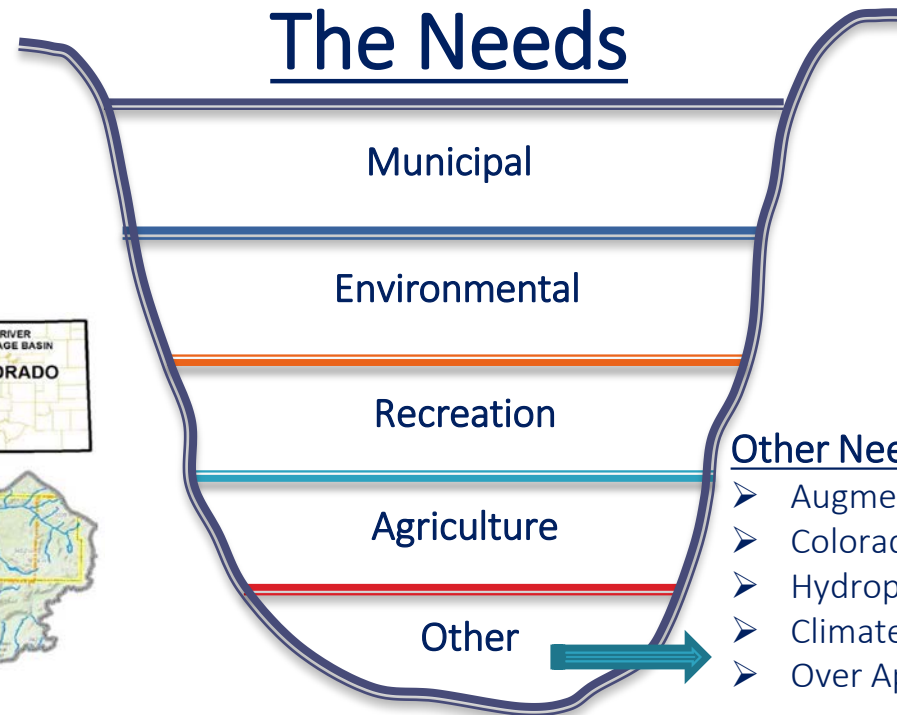


- Identify potential water supplies to replace Kenney Reservoir.
- Identify future water needs in the WR Basin and region.
- Perform an initial water supply alternatives analysis.



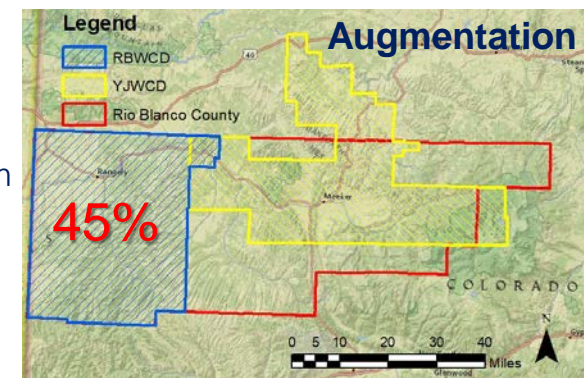
> 25 alternatives screened

## The Needs



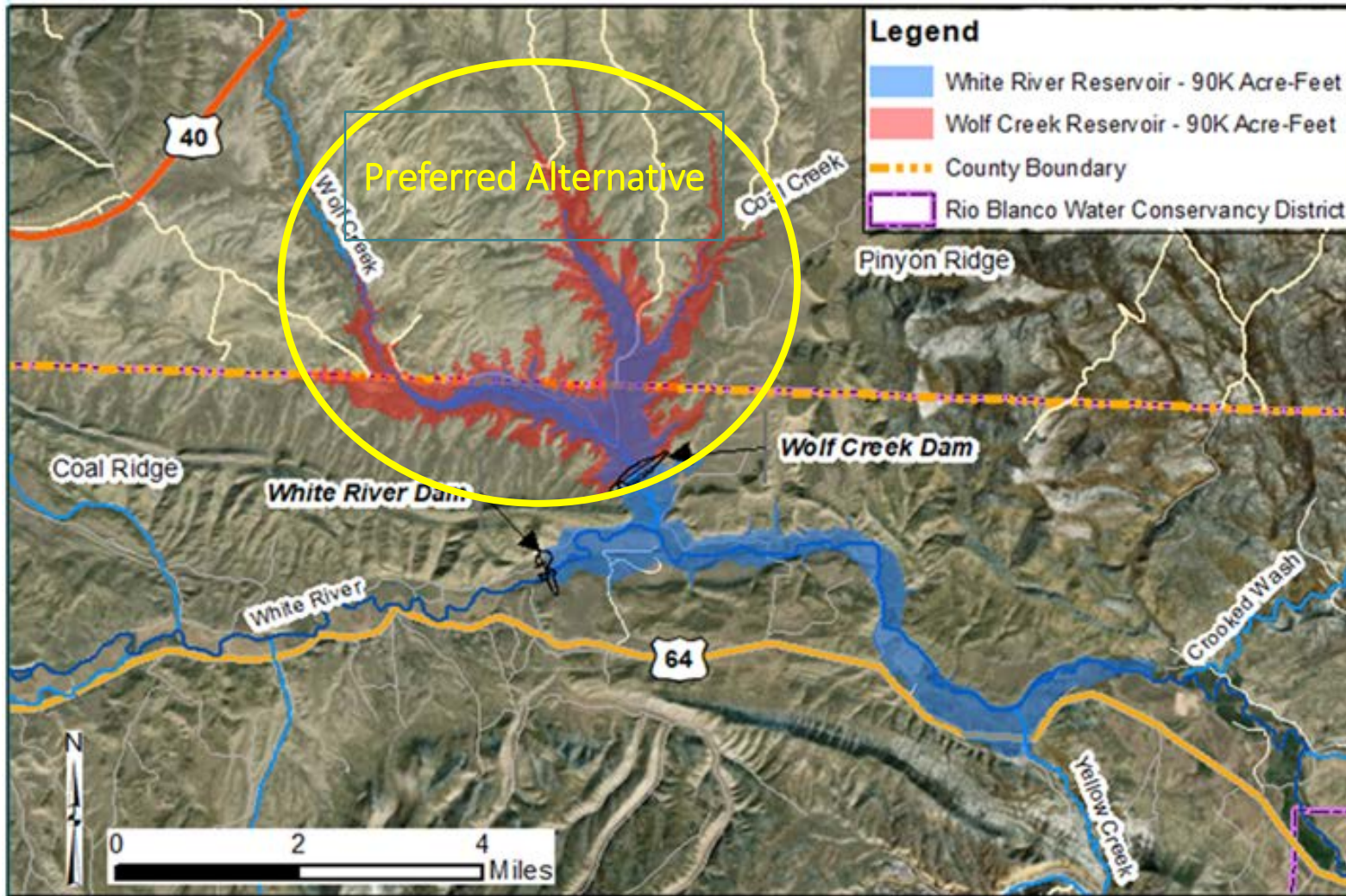
### Other Needs:

- Augmentation
- Colorado River Risk Reduction
- Hydropower
- Climate Change/Aridification
- Over Appropriation





# Preferred Alternative



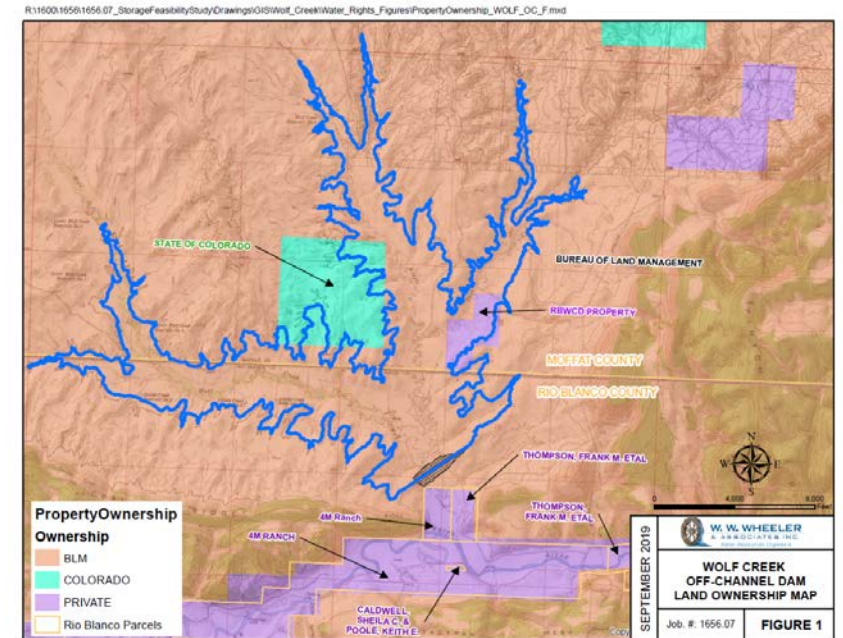
*Wolf Creek Dam w/pump station  
is the preferred alternative*

**66,720 AF Storage = \$142M**

**\$2,200/acre foot to construct**

**Anticipated Annual O&M = Less than \$6/acre foot**

*\*2018 dollars*





# The Water Decree – 2014 Filing

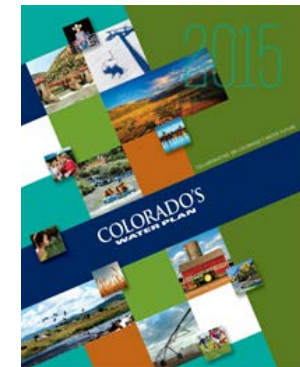
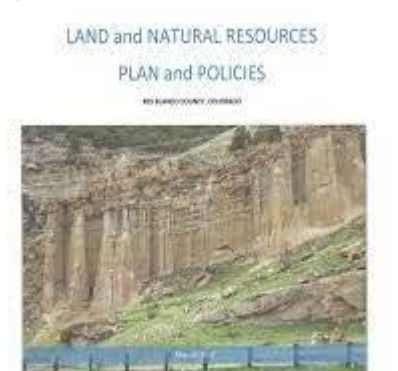
- Decreed Amount : **66,720 Acre Feet**
- "Use or Proposed Use: **municipal** use (including but not limited to **domestic, irrigation, commercial, and industrial** uses) for the Town of Rangely, **augmentation** (to augment depletions through a future **blanket augmentation plan for water users within the District Boundaries and within the Yellow Jacket Water Conservancy District boundaries** pursuant to leases or exchanges of water under C.R.S. § 37-83-106), **mitigation** of environmental impacts of the Wolf Creek Reservoir project ("Mitigation"), **hydroelectric power generation** exercised only in conjunction with releases for other decreed beneficial uses, and **in-reservoir uses for recreation, piscatorial, and wildlife habitat.**"
- "Annual releases from the reservoir under the subject water right shall be limited to 7,000 acre-feet for municipal and augmentation uses and 20,720 acre-feet for Mitigation."
- "The above limits on annual releases are not intended to prevent releases in excess of those amounts to the extent any such additional releases are required or authorized by statute or rule."



# Additional Work Completed

- Agreements with Rio Blanco County, Town of Rangely, & Yellow Jacket Water Conservancy District.
- Geotechnical Investigation at Wolf Creek
- Rio Blanco County Pre-Disaster Natural Hazards Strategic Program & Plan
- RBC Economic Development Strategy Plan (Better City)
- RBC Land and Natural Resource Plan and Policy
- RBWCD Land Purchase in Wolf Creek
- Yampa-White-Green BRT Basin Implementation Plan *(Meets all 8 BRT Measurable Goals and Out-comes)*
- Colorado State Water Plan *(Meets CWP Goals and Objectives)*
- White River Integrated Water Initiative *(Aligns with goals of the initiative)*
- WRMP/PBO *(Provides reliable mechanism to substantially augment flows to have a completed plan)*

RIO BLANCO COUNTY  
OFFICE OF EMERGENCY  
MANAGEMENT  
APPENDIX N: RIO BLANCO COUNTY RESILIENT RECOVERY COALITION PLAN  
OF EMERGENCY OPERATING PLAN



# Regional Benefits

- ▶ Solution to many regional water needs
- ▶ Water for Endangered Species, Species of Concern, and stream ecology
- ▶ Benefits + value to local economies & properties
- ▶ Recreation potential
- ▶ Augmentation Water for:
  - Curtailment or Basin Administration
  - Municipal and Industrial
  - Agriculture
  - Over appropriation
  - Hydropower
  - Other beneficial uses





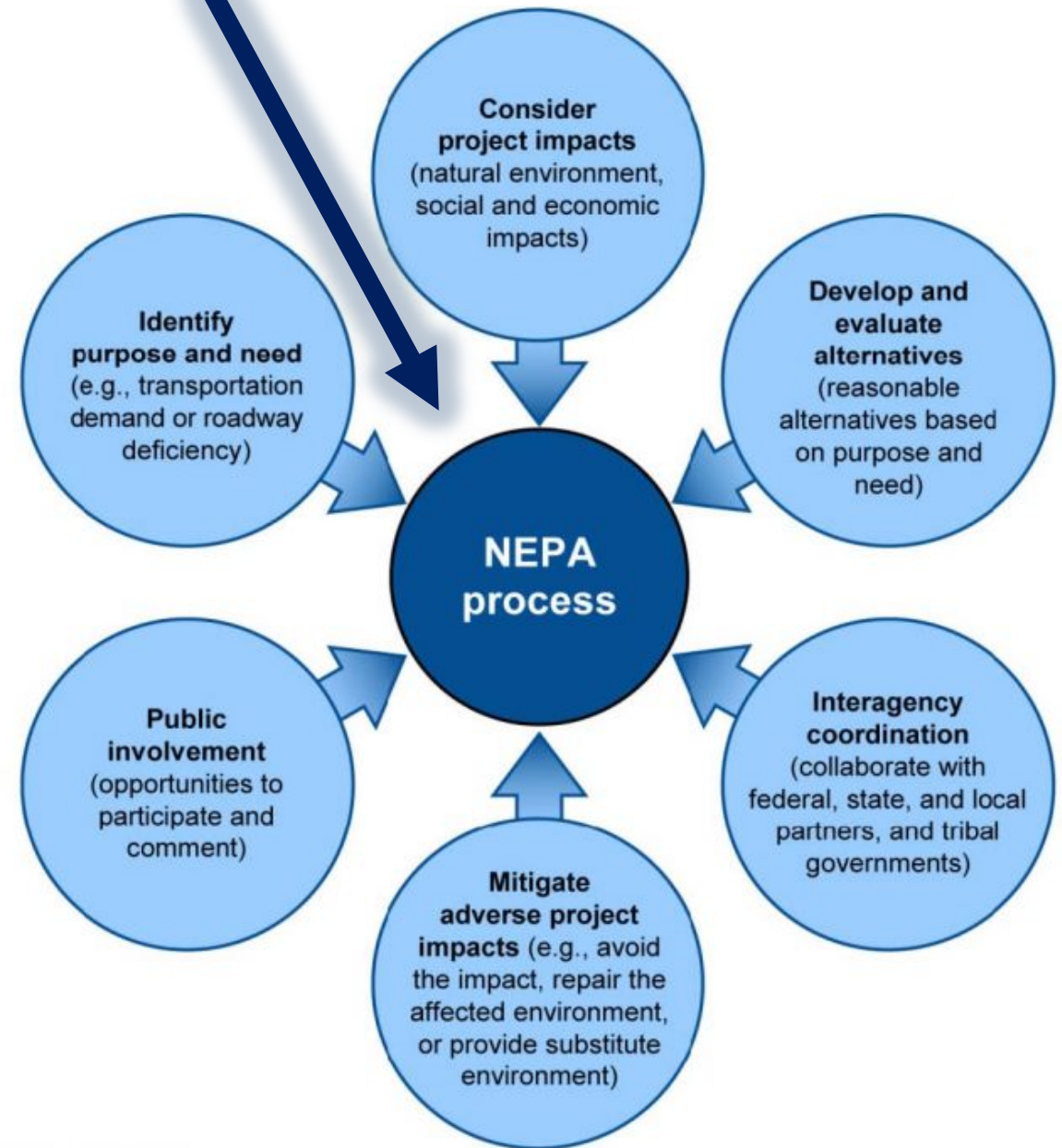
# What's Next?

## Permitting Partners

- Rio Blanco County
- Town of Rangely
- Colorado River District – CFP
- Rio Blanco Water Conservancy District

## THE REALITY

- Our White River region is in a water crisis.
- Without a firm water supply;
  - There will be curtailment.
  - There will be water users & environments in our region losing a portion & in some occurrences all water supply for present and future uses.
- There is a risk we may not get permits as with any project of this nature.
- No Action is not an alternative



# Thank you for the Support



RBWCD has substantial community SUPPORT

Letters of Support, Financial Support, Technical, or other types of support i.e., Staff/legal:

- ▶ Town of Meeker
- ▶ AGNC
- ▶ Yampa-White-Green BRT
- ▶ City of Craig
- ▶ Moffat County
- ▶ Rio Blanco County
- ▶ Rangely Chamber
- ▶ Meeker Chamber
- ▶ Town of Rangely
- ▶ Colorado First Conservation District
- ▶ White River Conservation District
- ▶ Douglas Creek Conservation District
- ▶ Colorado River District
- ▶ Club 20
- ▶ CWCB - Financial and project support
- ▶ Colorado Water Plan
- ▶ Lower White River Weed and Pest District
- ▶ White River Integrated Water Initiative
- ▶ Yellow Jacket WCD
- ▶ Craig Chamber of Commerce

