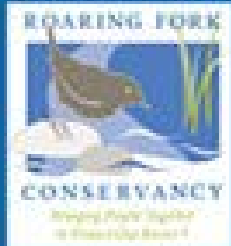




Roaring Fork Updates

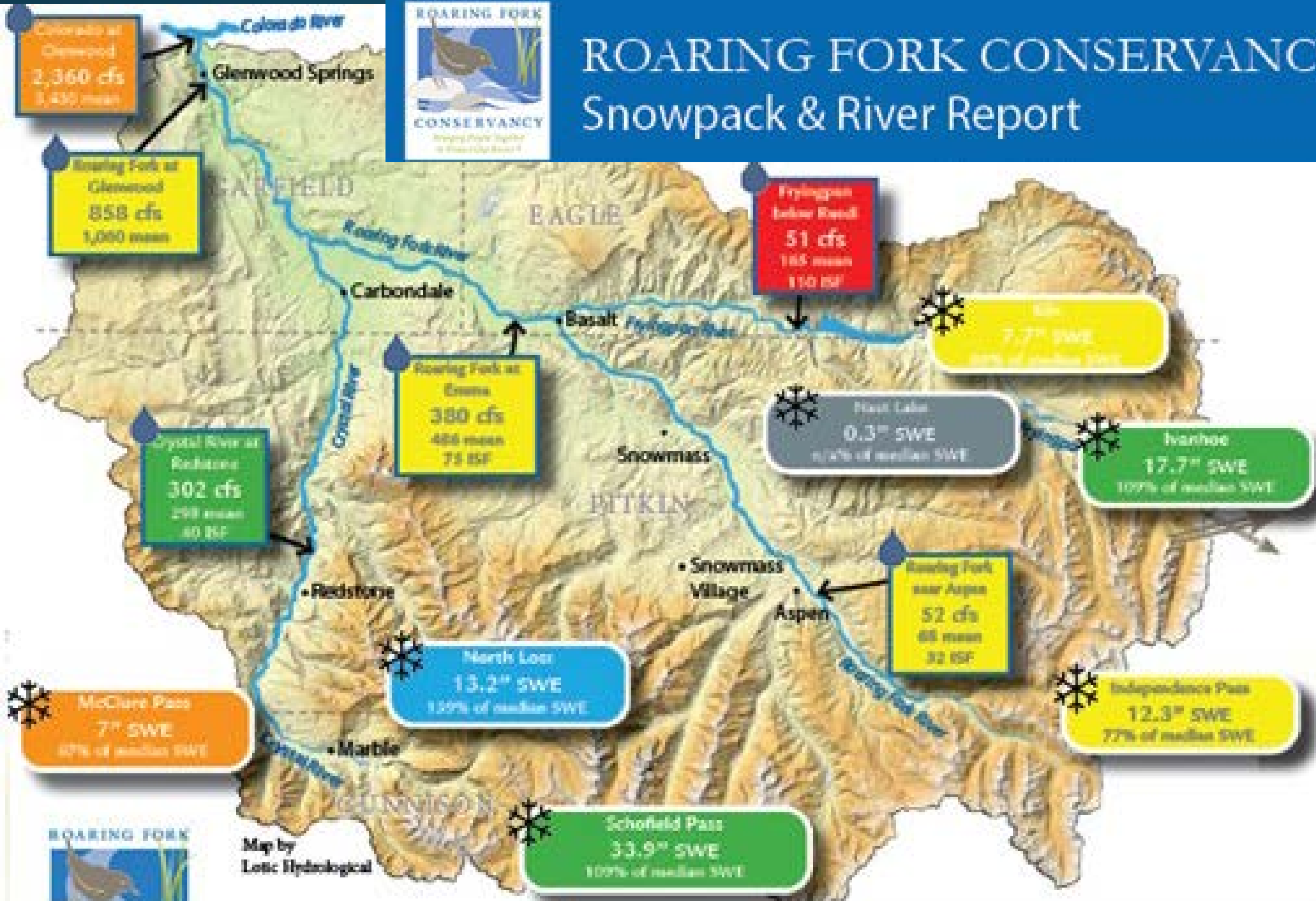
April Long

Ruedi Water and Power Authority



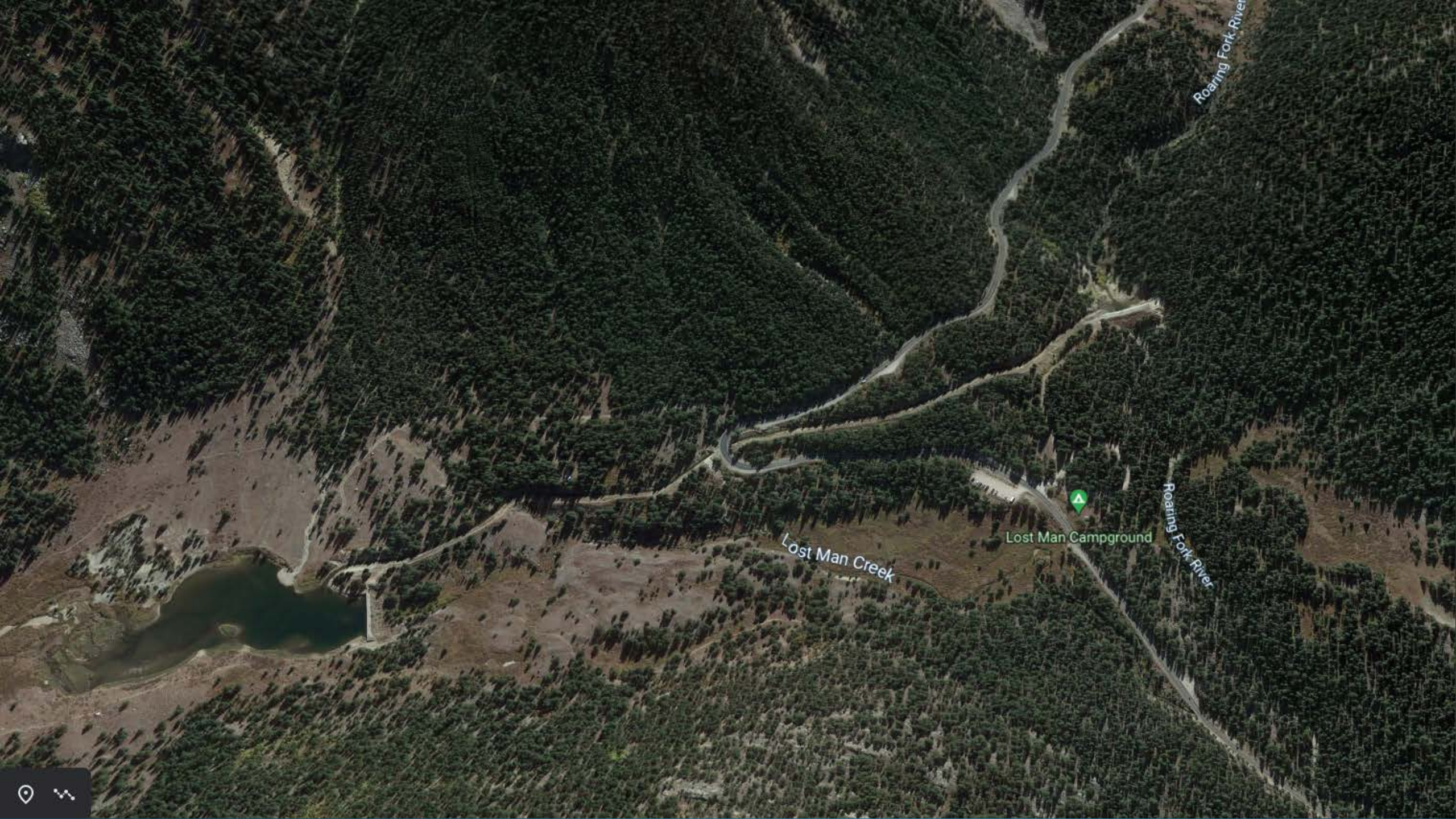
ROARING FORK CONSERVANCY

Snowpack & River Report



Map by
Lotic Hydrological





Roaring Fork River

Lost Man Creek

Lost Man Campground

Roaring Fork River





Roaring Fork River

Lost Man Creek finds its way back to Roaring Fork River



by **Brent Gardner-Smith**

June 14, 2016





Roaring Fork in Aspen:
Flows above 32cfs for 3 weeks
longer than in similar years





Ruedi Reservoir:

- Did not fill last year
- Second lowest level since built
- Aim to fill by July 4
- Tracking better than 2021 but worse than average
- Releasing 110 cfs now until full (or Cameo or contract calls)

Ruedi Release Targets

Hydropower

- Head and Flow – 100-300 cfs

Aquatic health, habitat

- Natural Hydrograph
- Temperature
- Anchor Ice Reduction - 70 cfs

Recreation

- Wadeable flows – 100 - 280 cfs
- Boatable - 450 cfs
- Temperature

Required on Fryingpan

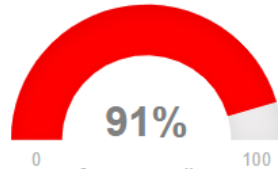
- May – Oct – 110 cfs
- Nov– April – 39 cfs



Water Temperature Prediction Tool

Use this tool to assess probabilities of water temperature exceedances on the Roaring Fork River at Glenwood Springs, Colorado

Peak Flow

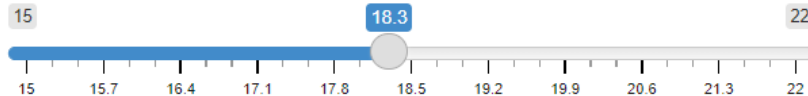


The probability of occurrence for exceeding a maximum weekly average temperature of 18.3 °C / 64.94 °F given the selected inputs for air temperature and streamflow is: 91 %

Temperature Threshold

Select a water temperature threshold to evaluate exceedances against.

Maximum Weekly Average Water Temp. (°C):



18.3 °C = 64.94 °F

Select the threshold weekly average water temperature (MWAT) of interest. This threshold may be informed by State of Colorado water quality standards or other biological and non-biological considerations

WATER THERMOMETER

TO FISH OR NOT TO FISH

**HEADS UP:
TOO HOT FOR TROUT**

**Over
68°F**

Trout are feeling stressed and need a break!

Mortality chances increase, even with proper catch-and-release. Try finding an alternative location to fish or try again when it cools down.

**65°F -
68°F**

Trout are slowing down and are feeling the heat!

Rope up with heavier tippet to land fish quicker. Keep them wet and skip the pictures to minimize their time out of the water. Be patient - they may need more time to revive before release.

**Below
65°F**

Trout are happy, hungry, and ready for a fight!

You can feel confident that the fish will be able to survive after proper catch-and-release.

Permanent Unified Watering Guidance

