

An aerial photograph of Lake Powell, showing the deep blue water of the reservoir nestled within the rugged, red sandstone canyons of the Colorado Plateau. The water reflects the sky, and the surrounding cliffs are covered in dense green trees and shrubs. A small boat is visible on the water, leaving a white wake. The image is framed by a large, semi-transparent circular overlay that contains the title and text.

# **Lake Powell & The Future of West Slope Water**

Colorado River District

Marielle Cowdin, Director of Public Relations





**The Colorado River  
District was formed in  
1937 to protect West  
Slope water users.**







# West Slope

# Interstate





# 1922 Colorado River Compact

---





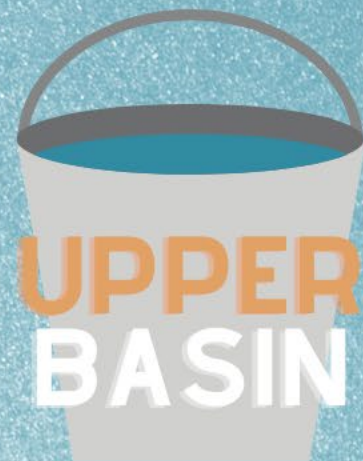
# The Colorado River Basin





11.5 MILLION  
ACRE FEET

# Colorado River



UPPER  
BASIN

4-4.5 MILLION  
ACRE FEET



LOWER  
BASIN

Actual Use



**2007**

**LAKE  
POWELL**

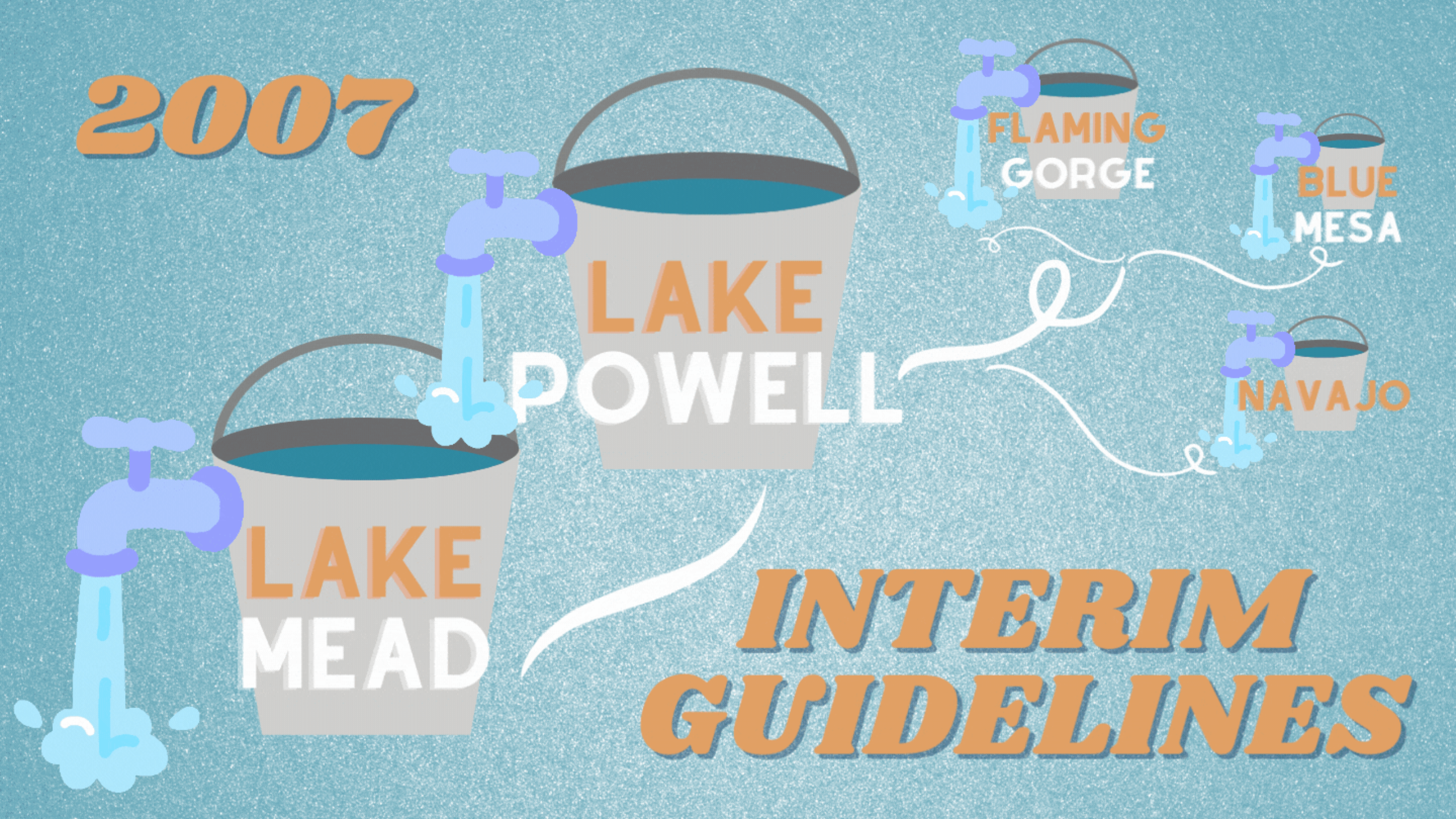
**FLAMING  
GORGE**

**BLUE  
MESA**

**NAVAJO**

**LAKE  
MEAD**

***INTERIM  
GUIDELINES***





# The Colorado River Basin



**Flaming Gorge**

77% full  
2,920,360 af

**Lake Powell**

**Elevation: 3524.06'**

24.13% full  
5,869,023 af



**Lake Mead**

**Elevation: 1063.25'**

33.51% full  
8,671,000 af



**Lee Ferry**



**Blue Mesa**

28% full  
236,357 af



**Navajo**

50% full  
846,700 af

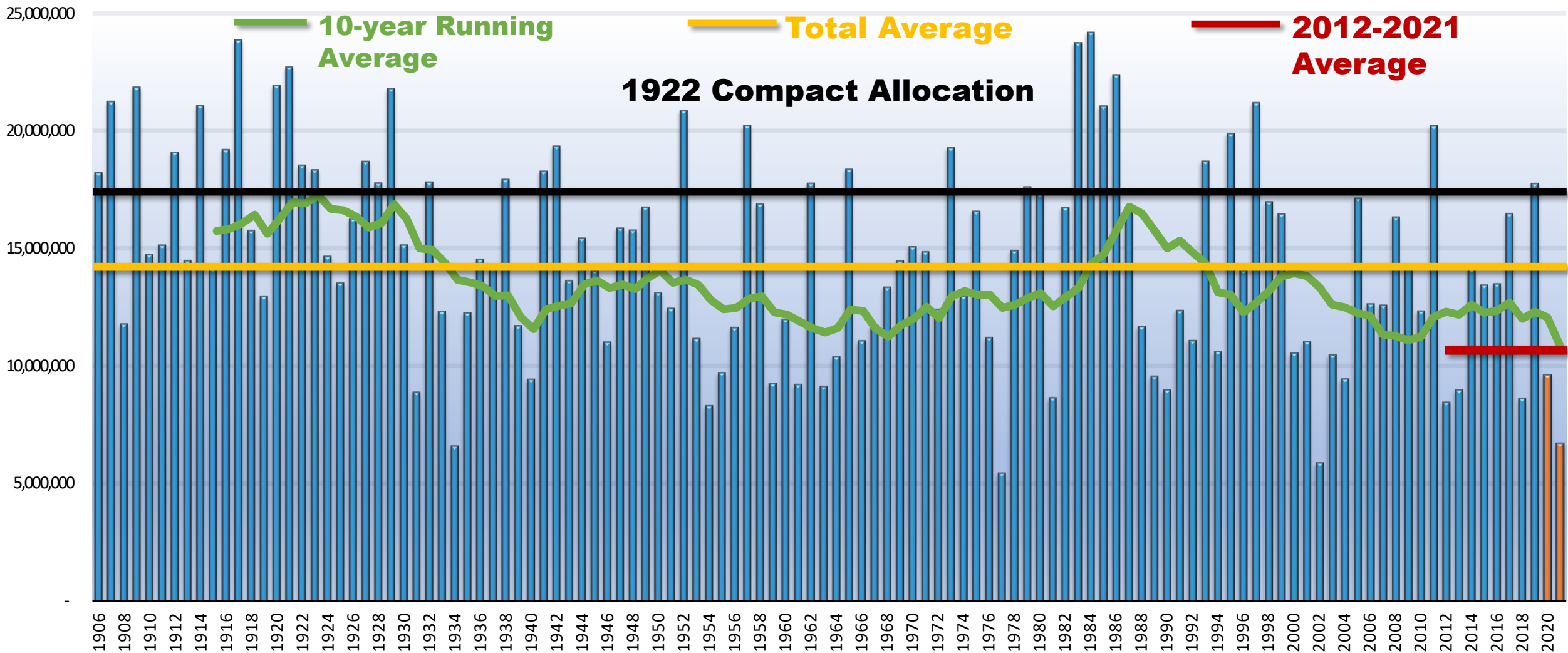


Effective as of  
March 23, 2022



# Provisional Natural Flows for the Colorado River at Lee's Ferry (USGS gauge 09380000)

## Water Years 1906-2021





# Multi-Decadal Drought Continues





**For every 1 degree Fahrenheit  
rise in temperature, streamflow  
is reduced between 3% to 9%.**

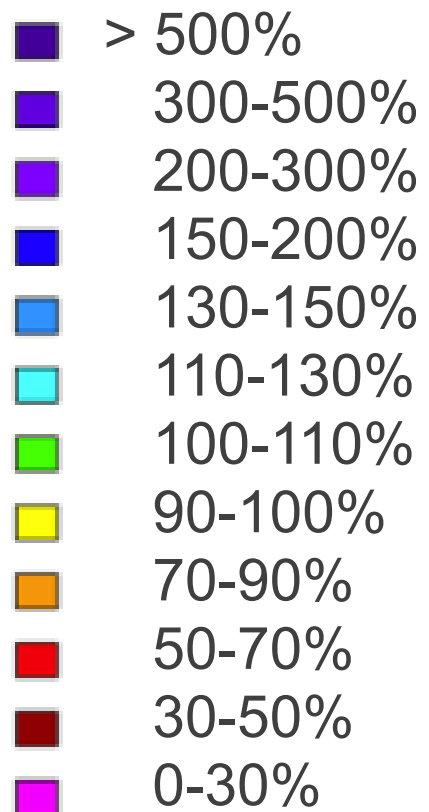


Data:  
Changing climate drives future streamflow declines and challenges in meeting water demand across the southwestern United States  
(Olivia L. Miller; et al, Journal of Hydrology, vol. 11, May, 2021)  
Colorado River flow dwindles as warming-driven loss of reflective snow energizes evaporation (P. C. D. Milly, K. A. Dunne, Science 2020)

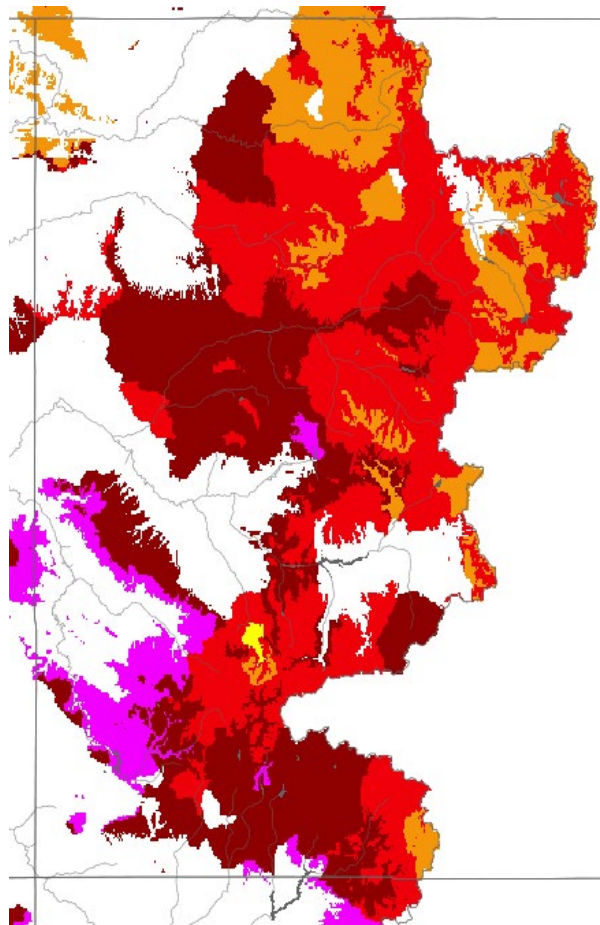


# Soil Moisture

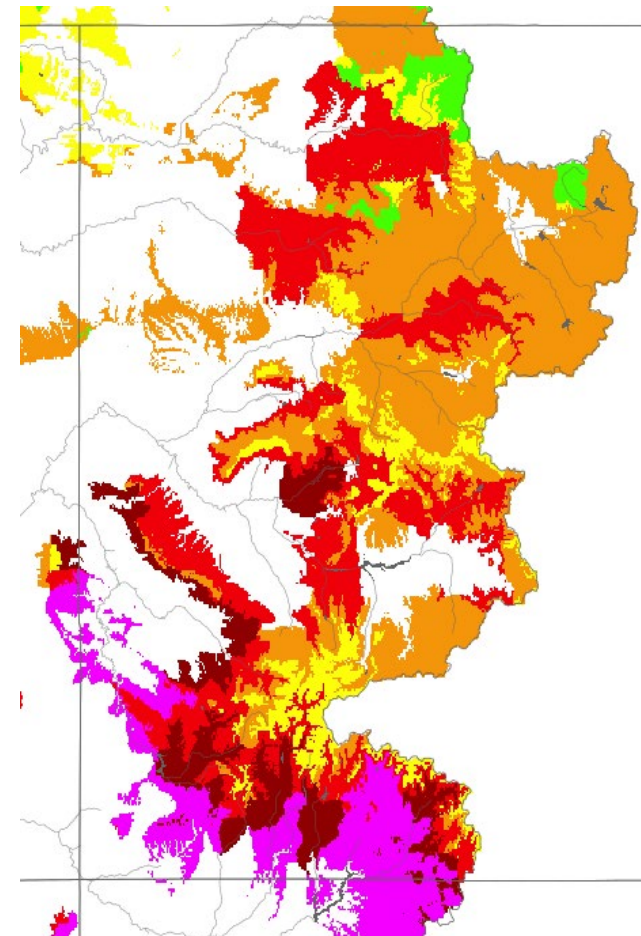
% of Average



November 15<sup>th</sup>, 2020



November 15<sup>th</sup>, 2021





# Population Growth

State of Colorado: 9 million by 2050

Colorado River Basin: 76 million by 2060



Source: Colorado State Demographer,  
U.S. Census Bureau (2020)

Colorado River Basin data from U.S. Bureau of Reclamation  
Colorado River Basin Water Supply and Demand Study (2012)



22 years of drought in Colorado, rest of the Southwest is worst stretch in 1,200 years, study shows

 The Colorado Sun

Lake Powell water level will fall below 'target elevation' of 3,525 feet

 St George News

**Federal government announces first-ever water shortage in Lake Mead, Colorado River**

BY ZACK BUDRYK - 08/16/21 05:03 PM EDT

**THE HILL**

Water releases from an already low Blue Mesa Reservoir up Lake Powell

**THE**

Colorado River states and feds are working on new plan to avoid another emergency water release to save Lake Powell

 CPR News





# Minimum Power Pool

3,490  
FEET





# Moving Forward

## Interstate

- Interim Guidelines Renegotiation
- Federal Policy-Making

## Across the Divide

- State Policy-Making
- Front Range Conservation Outreach

## Western Slope

- Innovative Local Partnerships
- Infrastructure Funding
- Forest, Watershed, and Soil Health







**COLORADORIVERDISTRICT.ORG**



**Colorado River District**



**@ColoradoWater**



**ColoradoRiverDistrict**