

An aerial photograph of Lake Powell, showing the deep blue water of the reservoir nestled within the rugged, red sandstone canyons of the Colorado Plateau. The water reflects the sky, and a small boat is visible in the lower center, leaving a white wake. The surrounding landscape is a mix of dense green trees and shrubs on the valley floor, contrasting with the arid, rocky cliffs. The image is framed by a large, semi-transparent circular overlay that contains the title text.

Lake Powell & The Future of West Slope Water

Colorado River District

Lindsay DeFrates, PR and Media Specialist



**The Colorado River
District was formed in
1937 to protect West
Slope water users.**





West Slope

Interstate





1922 Colorado River Compact

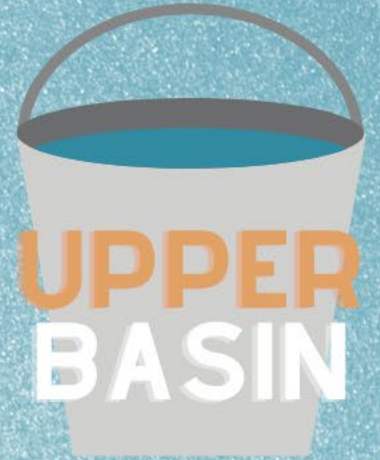


The Colorado River Basin



11.5 MILLION
ACRE FEET

Colorado River



UPPER
BASIN

4-4.5 MILLION
ACRE FEET



LOWER
BASIN

Actual Use

2007

**LAKE
POWELL**

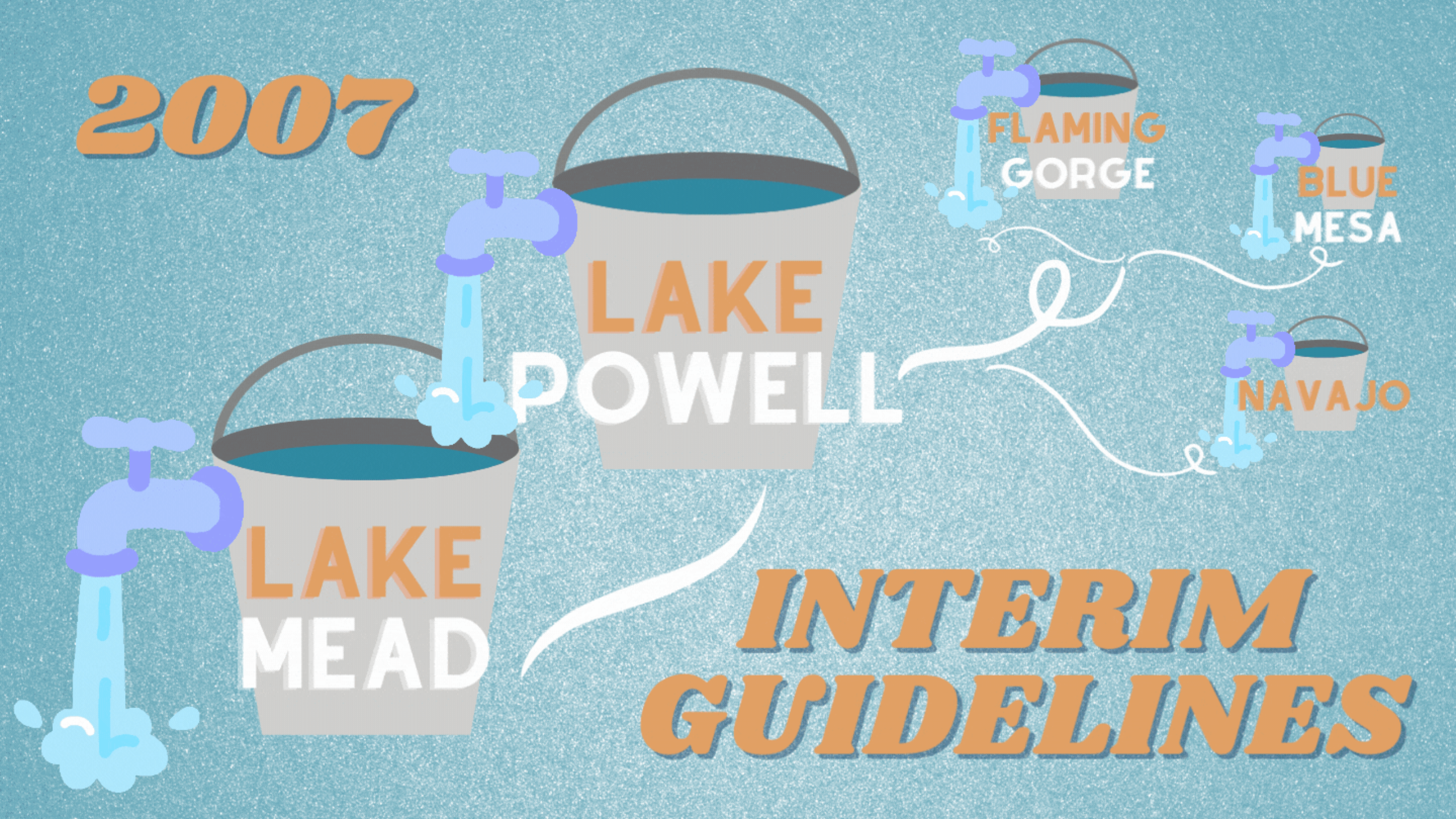
**FLAMING
GORGE**

**BLUE
MESA**

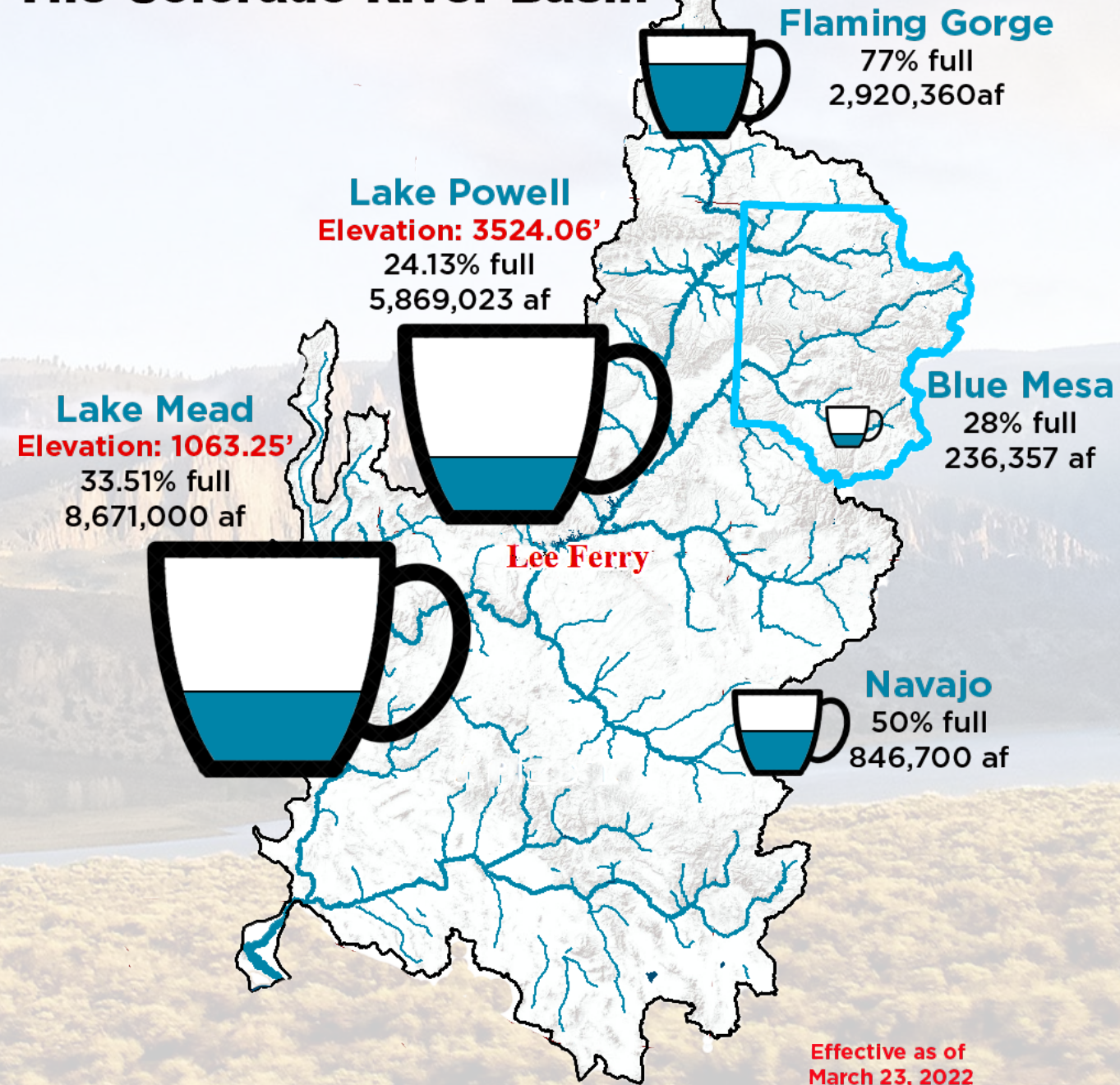
NAVAJO

**LAKE
MEAD**

***INTERIM
GUIDELINES***

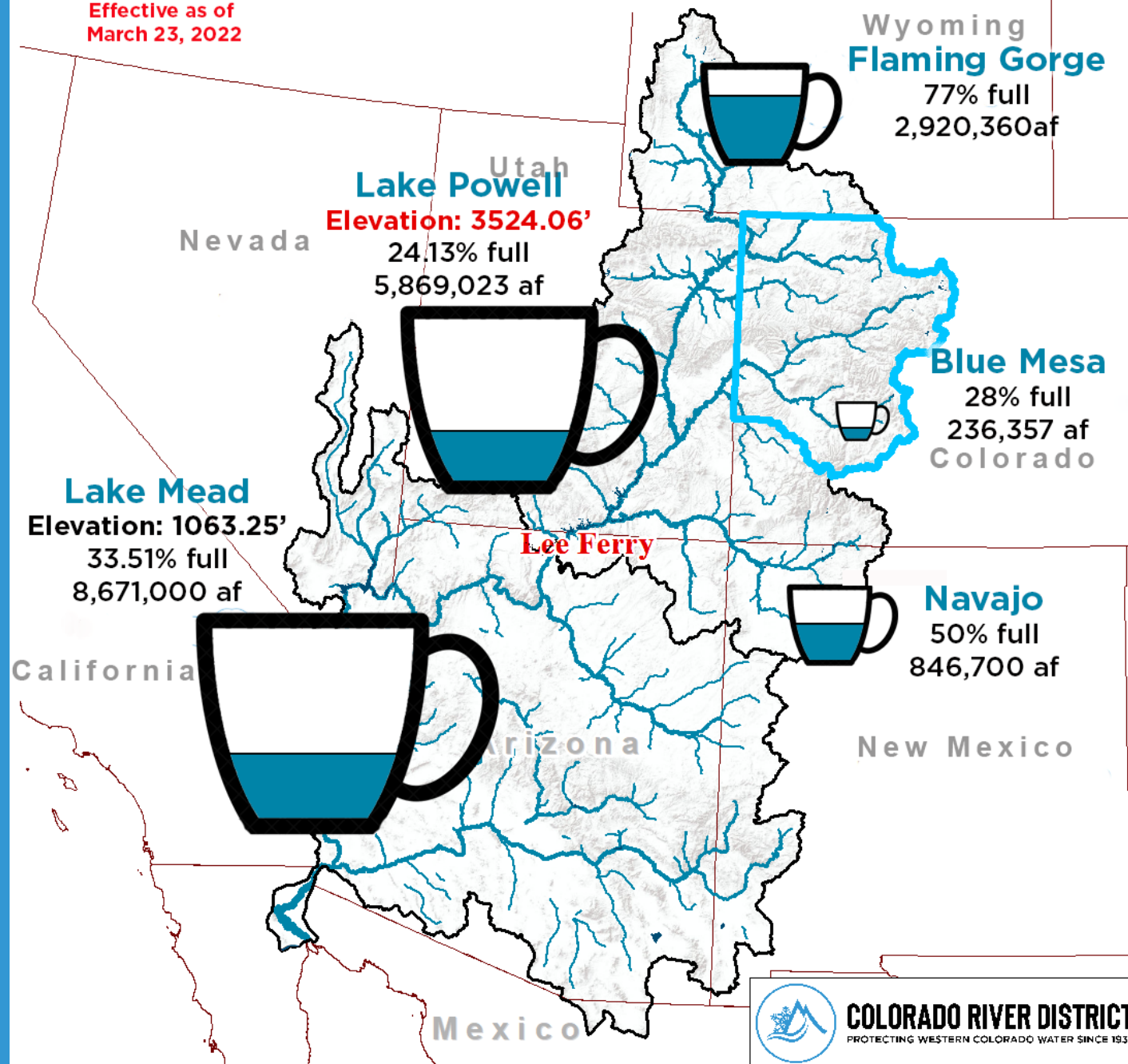


The Colorado River Basin



Colorado River Basin

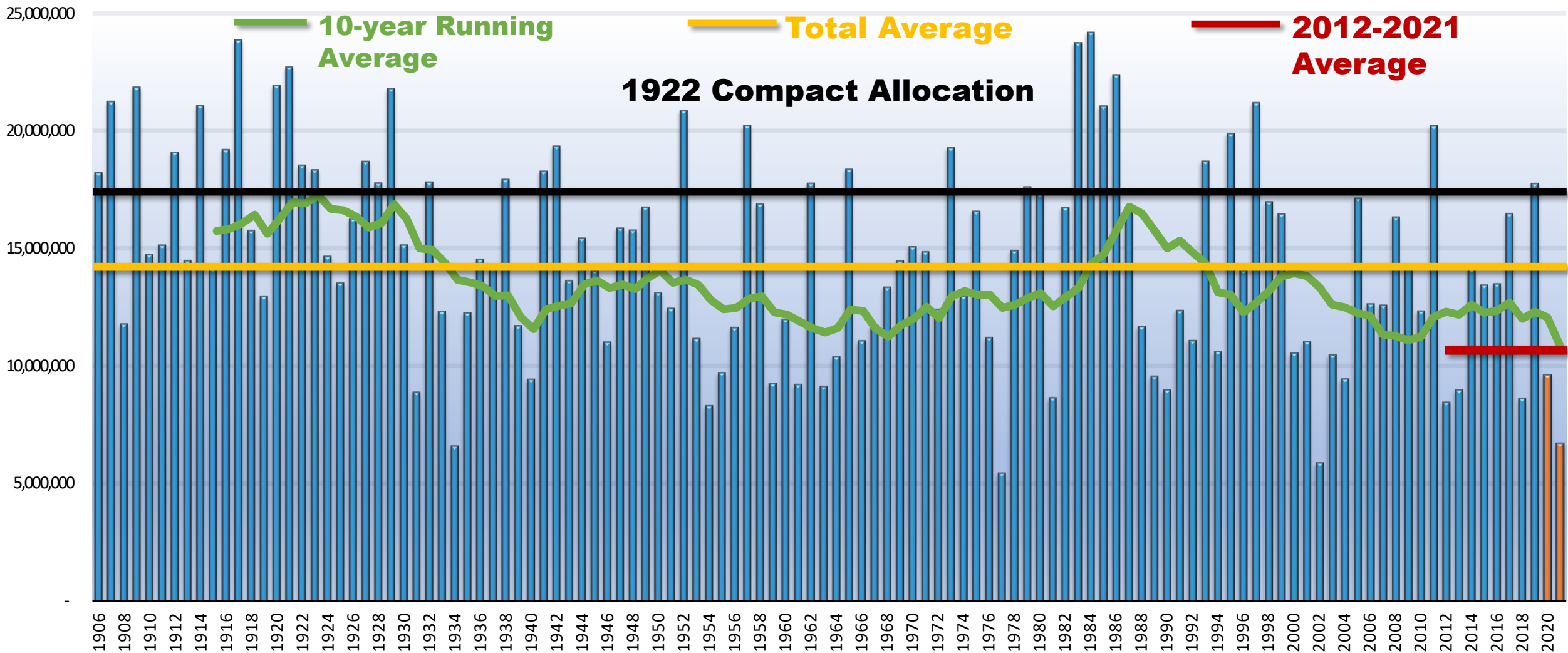
Effective as of
March 23, 2022



COLORADO RIVER DISTRICT
PROTECTING WESTERN COLORADO WATER SINCE 1937

Provisional Natural Flows for the Colorado River at Lee's Ferry (USGS gauge 09380000)

Water Years 1906-2021



Multi-Decadal Drought Continues



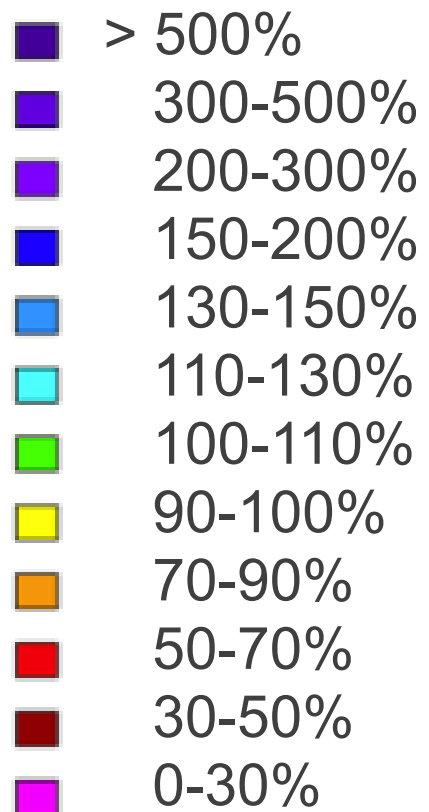
**For every 1 degree Fahrenheit
rise in temperature, streamflow
is reduced between 3% to 9%.**



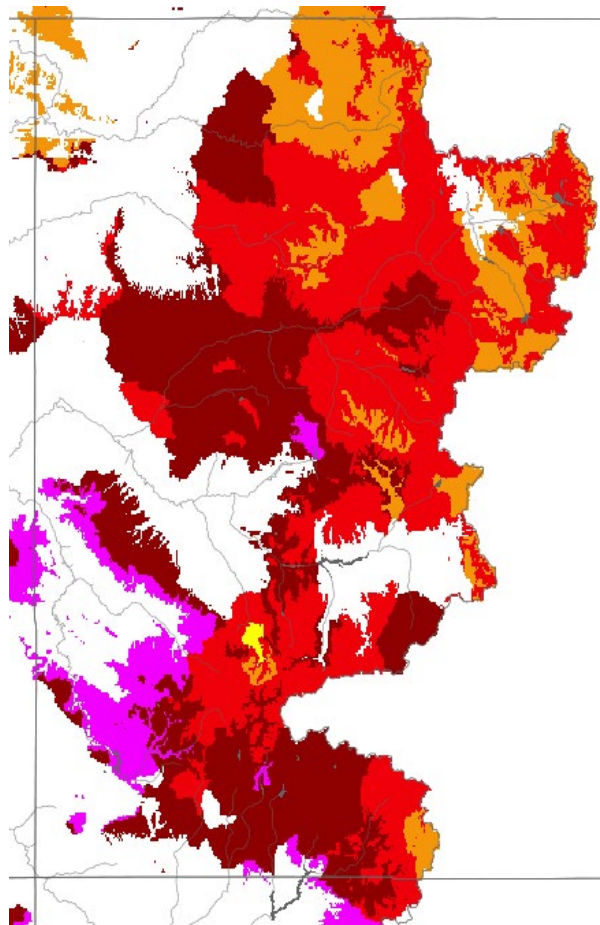
Data:
Changing climate drives future streamflow declines and challenges in meeting water demand across the southwestern United States
(Olivia L. Miller; et al, Journal of Hydrology, vol. 11, May, 2021)
Colorado River flow dwindles as warming-driven loss of reflective snow energizes evaporation (P. C. D. Milly, K. A. Dunne, Science 2020)

Soil Moisture

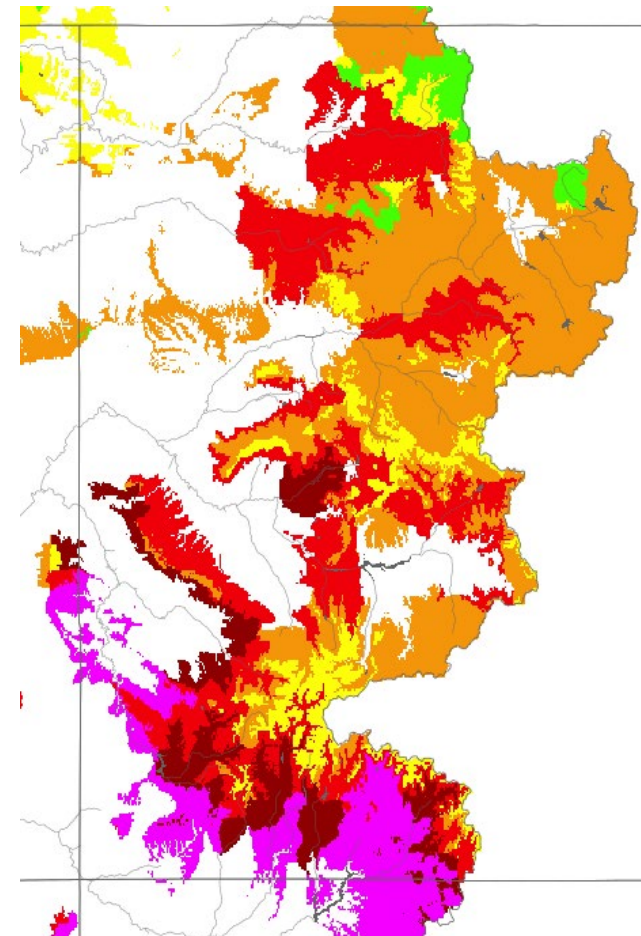
% of Average



November 15th, 2020



November 15th, 2021



Population Growth

State of Colorado: 9 million by 2050

Colorado River Basin: 76 million by 2060



Source: Colorado State Demographer,
U.S. Census Bureau (2020)

Colorado River Basin data from U.S. Bureau of Reclamation
Colorado River Basin Water Supply and Demand Study (2012)

22 years of drought in Colorado, rest of the Southwest is worst stretch in 1,200 years, study shows

 The Colorado Sun

Lake Powell water level will fall below 'target elevation' of 3,525 feet

 St George News

Federal government announces first-ever water shortage in Lake Mead, Colorado River

BY ZACK BUDRYK - 08/16/21 05:03 PM EDT

 THE HILL

Water releases from an already low Blue Mesa Reservoir up Lake Powell

 THE COLORADO SUN

Colorado River states and feds are working on new plan to avoid another emergency water release to save Lake Powell

 CPR News



Minimum Power Pool

3,490
FEET



Moving Forward

Interstate

- Interim Guidelines Renegotiation
- Federal Policy-Making

Across the Divide

- State Policy-Making
- Front Range Conservation Outreach

Western Slope

- Innovative Local Partnerships
- Infrastructure Funding
- Forest, Watershed, and Soil Health





COLORADORIVERDISTRICT.ORG



Colorado River District



@ColoradoWater



ColoradoRiverDistrict