

An aerial photograph of Lake Powell, showing the deep blue water of the reservoir nestled within the rugged, red sandstone canyons of the Colorado Plateau. The water reflects the sky, and the surrounding cliffs are covered in dense green trees and shrubs. A small boat is visible on the water, leaving a white wake. The image is framed by a large, semi-transparent circular overlay that contains the title and text.

Lake Powell & The Future of West Slope Water

Colorado River District

Marielle Cowdin, Director of Public Relations



**The Colorado River
District was formed in
1937 to protect West
Slope water users.**





West Slope

Interstate





1922 Colorado River Compact

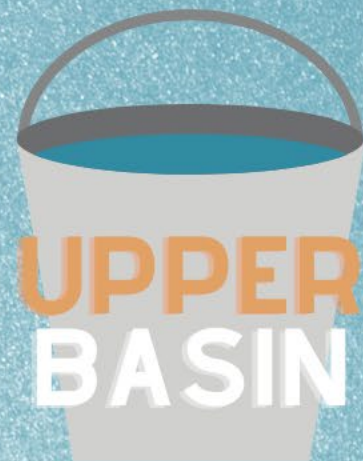


The Colorado River Basin



11.5 MILLION
ACRE FEET

Colorado River



UPPER
BASIN

4-4.5 MILLION
ACRE FEET



LOWER
BASIN

Actual Use

2007

**LAKE
POWELL**

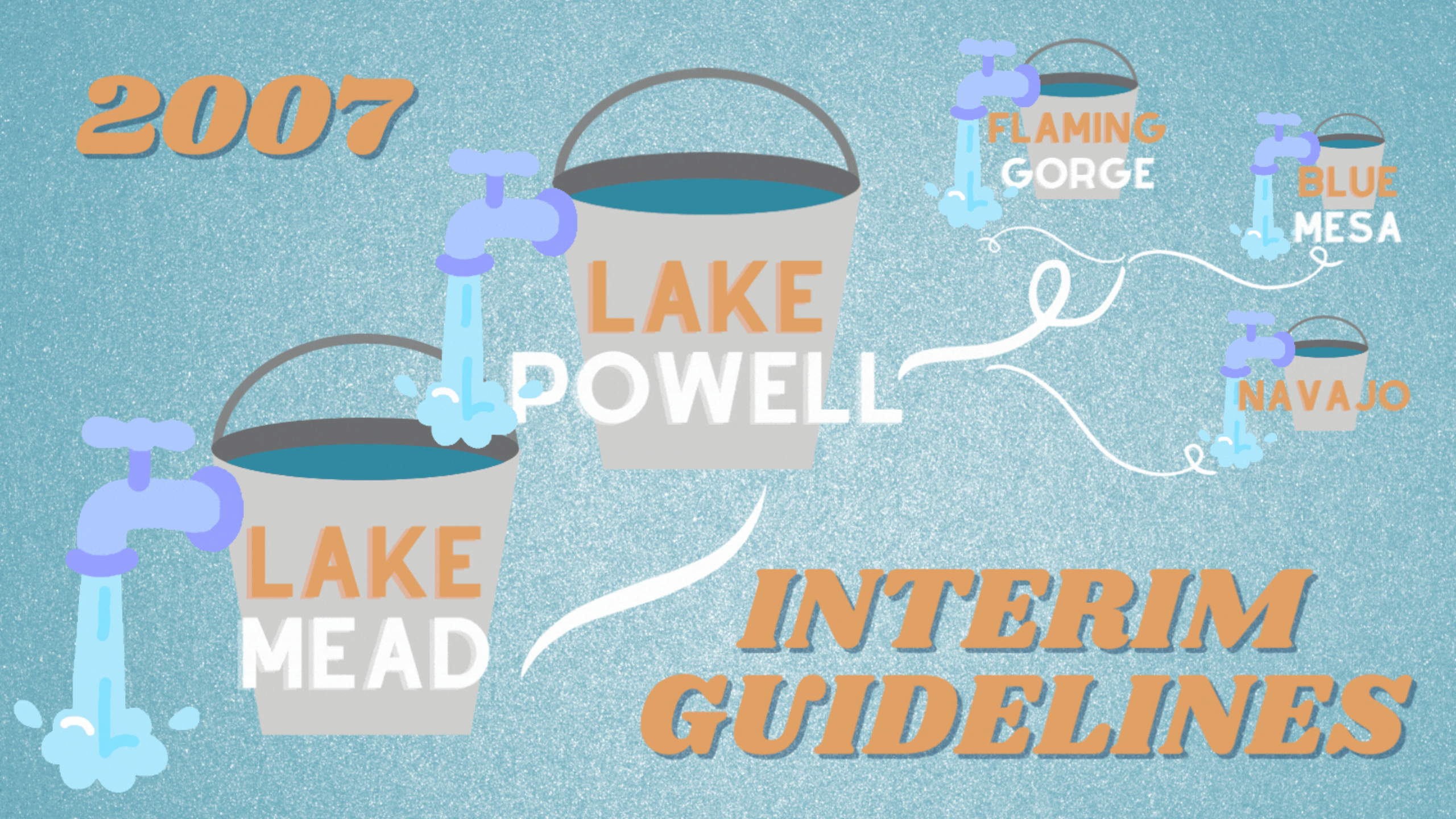
**FLAMING
GORGE**

**BLUE
MESA**

NAVAJO

**LAKE
MEAD**

***INTERIM
GUIDELINES***



The Colorado River Basin



Flaming Gorge

77% full
2,935,703 af

Lake Powell

Elevation: 3522.94'

23.85% full
5,800,895 af



Lake Mead

Elevation: 1059.52'

32.41% full
8,386,732 af



Lee Ferry



Blue Mesa

29% full
242,611 af



Navajo

50% full
861,993 af



Effective as of
April 10, 2022

Multi-Decadal Drought Continues



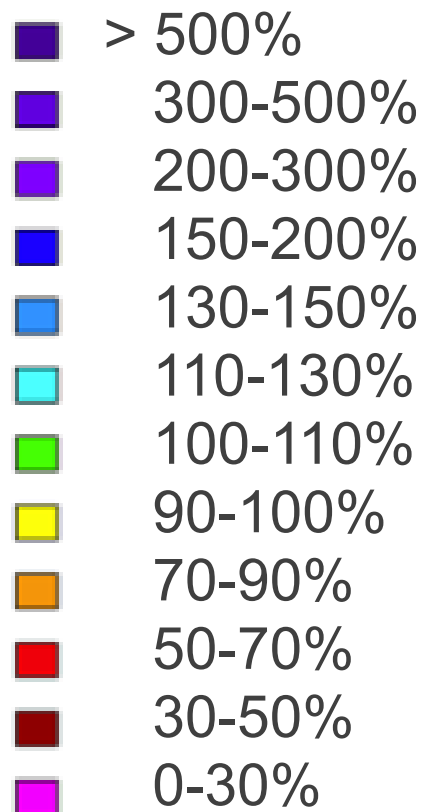
**For every 1 degree Fahrenheit
rise in temperature, streamflow
is reduced between 3% to 9%.**



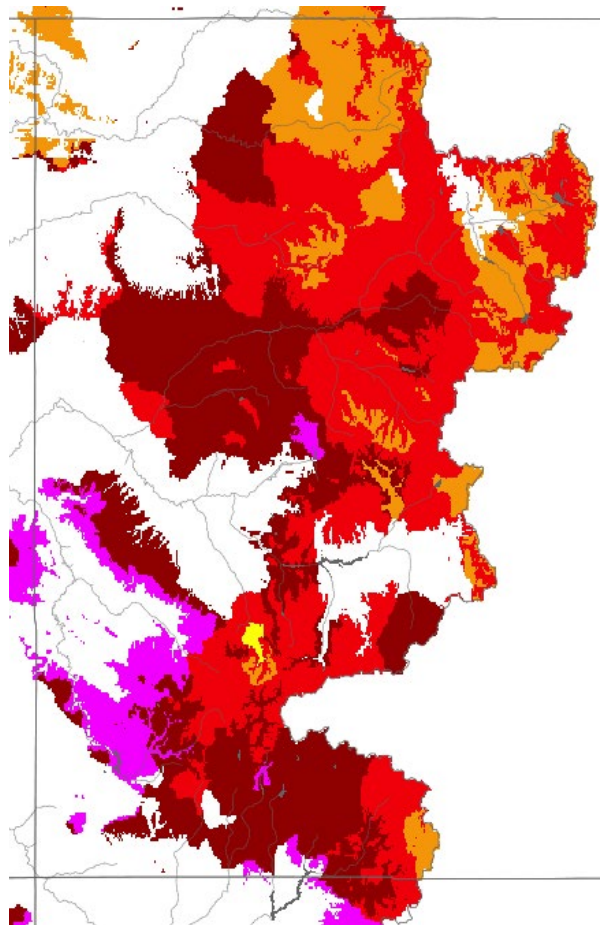
Data:
Changing climate drives future streamflow declines and challenges in meeting water demand across the southwestern United States
(Olivia L. Miller; et al, Journal of Hydrology, vol. 11, May, 2021)
Colorado River flow dwindles as warming-driven loss of reflective snow energizes evaporation (P. C. D. Milly, K. A. Dunne, Science 2020)

Soil Moisture

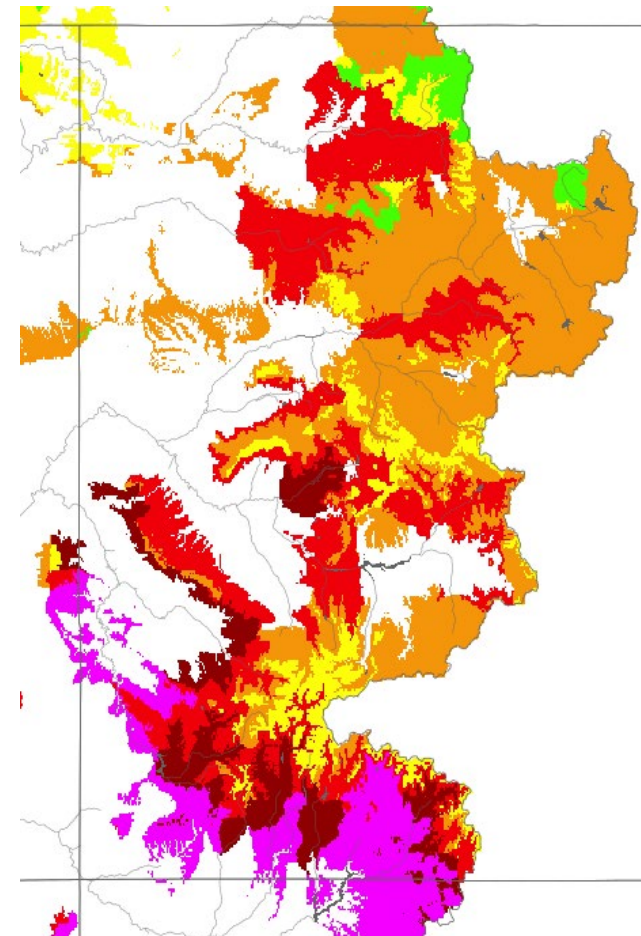
% of Average



November 15th, 2020



November 15th, 2021



Population Growth

State of Colorado: 9 million by 2050

Colorado River Basin: 76 million by 2060

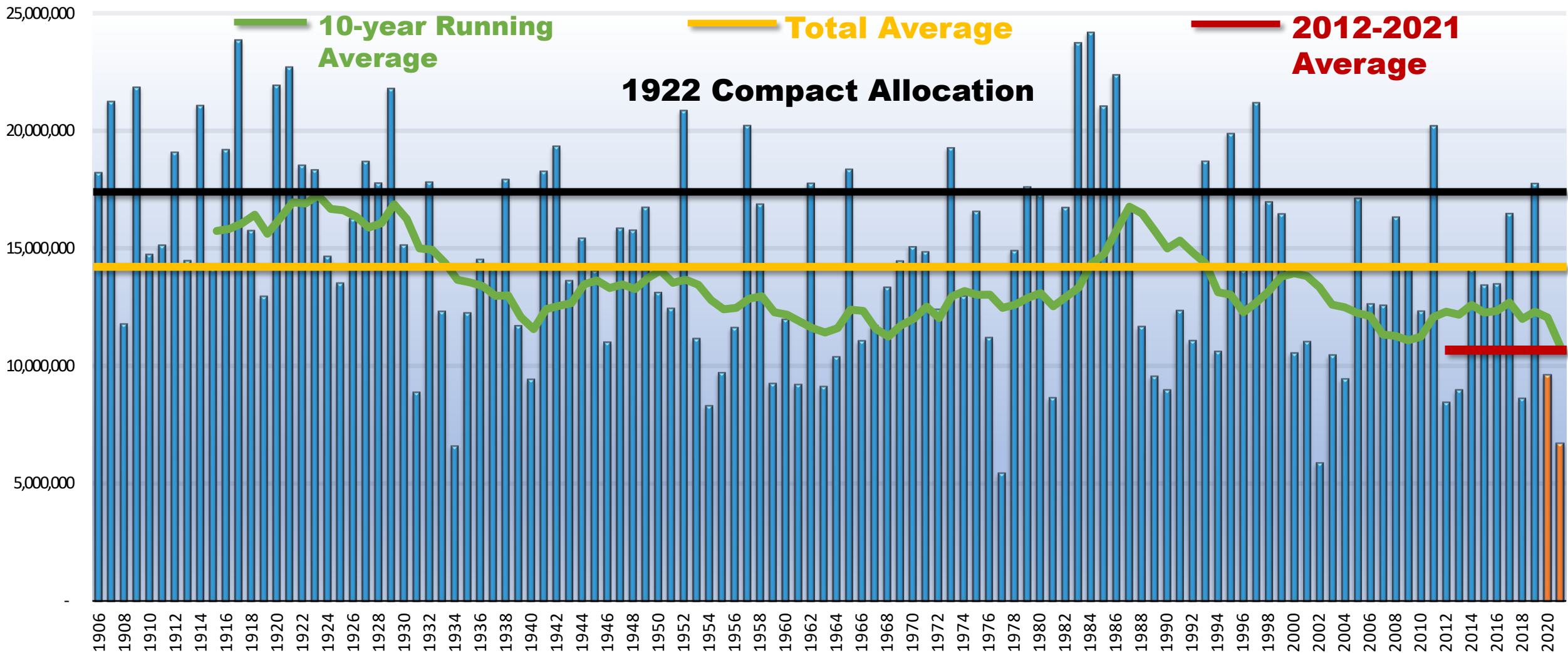


Source: Colorado State Demographer,
U.S. Census Bureau (2020)

Colorado River Basin data from U.S. Bureau of Reclamation
Colorado River Basin Water Supply and Demand Study (2012)

Provisional Natural Flows for the Colorado River at Lee's Ferry (USGS gauge 09380000)

Water Years 1906-2021



22 years of drought in Colorado, rest of the Southwest is worst stretch in 1,200 years, study shows



Lake Powell water level will fall below 'target elevation' of 3,525 feet



Federal government announces first-ever water shortage in Lake Mead, Colorado River

BY ZACK BUDRYK - 08/16/21 05:03 PM EDT



Water releases from an already low Blue Mesa Reservoir up Lake Powell



Colorado River states and feds are working on new plan to avoid another emergency water release to save Lake Powell



Minimum Power Pool

3,490
FEET



Moving Forward

Interstate

- Interim Guidelines Renegotiation
- Federal Policy-Making

Across the Divide

- State Policy-Making
- Front Range Conservation Outreach

Western Slope

- Innovative Local Partnerships
- Infrastructure Funding
- Forest, Watershed, and Soil Health





COLORADORIVERDISTRICT.ORG



Colorado River District



@ColoradoWater



ColoradoRiverDistrict