

An aerial photograph of Lake Powell, showing its iconic red sandstone cliffs and green water. A speedboat is visible on the water, leaving a white wake. The image is partially covered by a semi-transparent circular overlay on the right side, which contains the title and speaker information. The background shows a lush green forest on the left and distant hills under a blue sky with clouds.

Lake Powell & The Future of West Slope Water

Colorado River District

Lindsay DeFrates, PR and Media Specialist



**The Colorado River
District was formed in
1937 to protect West
Slope water users.**





West Slope

Interstate



The Colorado River Basin





1922 Colorado River Compact



11.5 MILLION
ACRE FEET

Colorado River



UPPER
BASIN

4-4.5 MILLION
ACRE FEET



LOWER
BASIN

Actual Use

2007

**LAKE
POWELL**

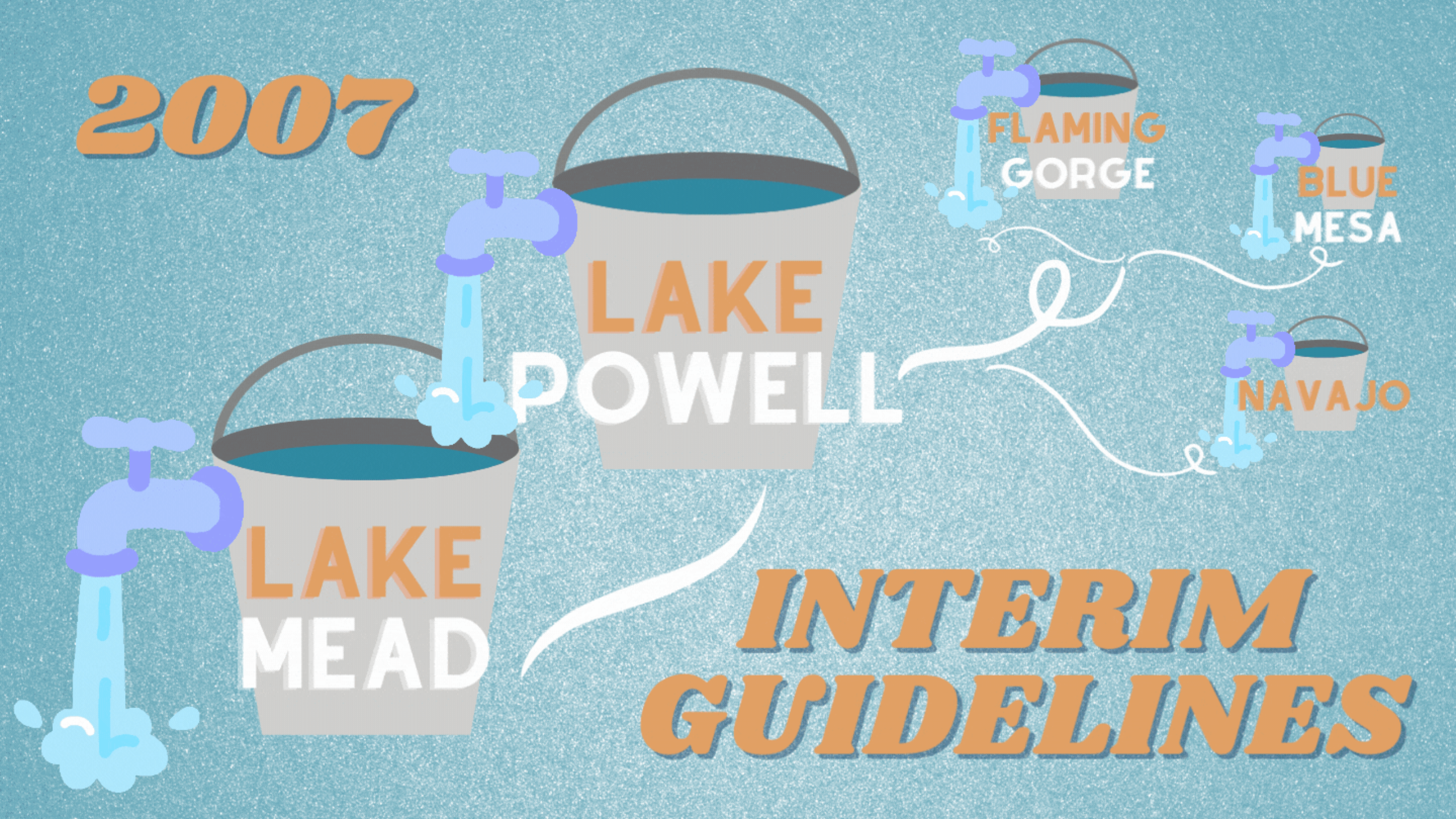
**FLAMING
GORGE**

**BLUE
MESA**

NAVAJO

**LAKE
MEAD**

***INTERIM
GUIDELINES***



Multi-Decadal Drought Continues



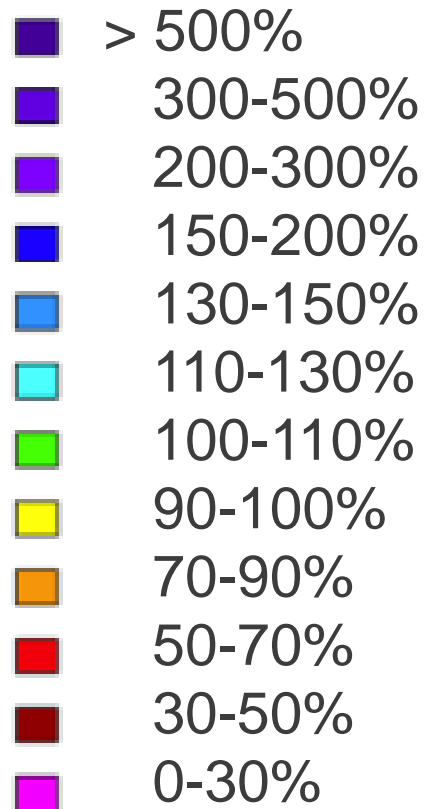
**For every 1 degree Fahrenheit
rise in temperature, streamflow
is reduced between 3% to 9%.**



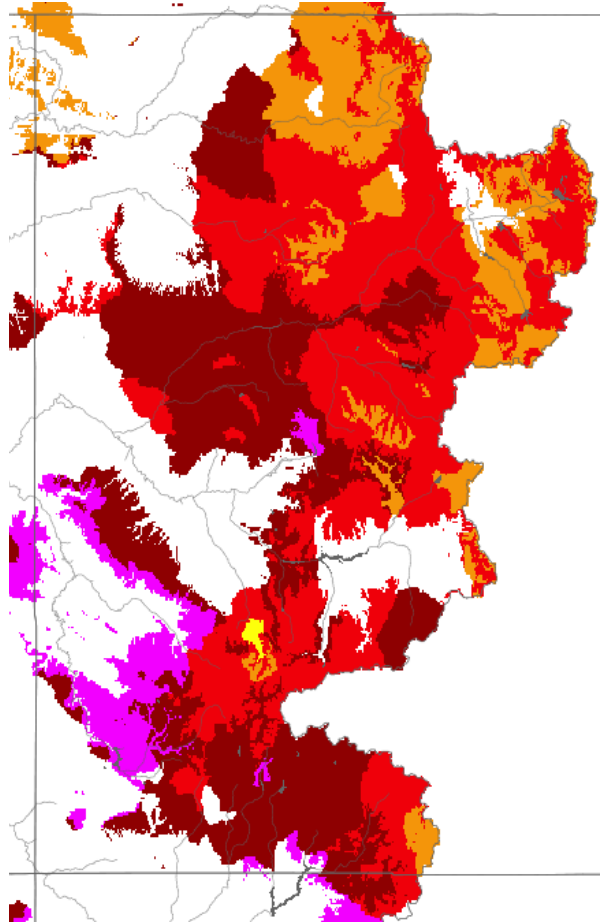
Data:
Changing climate drives future streamflow declines and challenges in meeting water demand across the southwestern United States
(Olivia L. Miller; et al, Journal of Hydrology, vol. 11, May, 2021)
Colorado River flow dwindles as warming-driven loss of reflective snow energizes evaporation (P. C. D. Milly, K. A. Dunne, Science 2020)

Soil Moisture

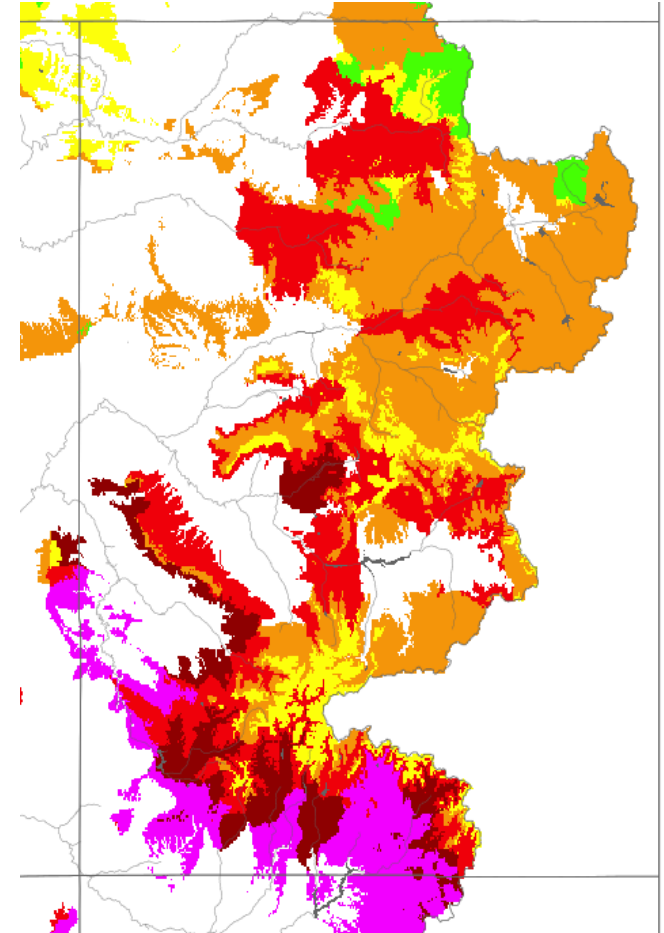
% of Average



November 15th, 2020



November 15th, 2021



Population Growth

State of Colorado: 9 million by 2050

Colorado River Basin: 76 million by 2060

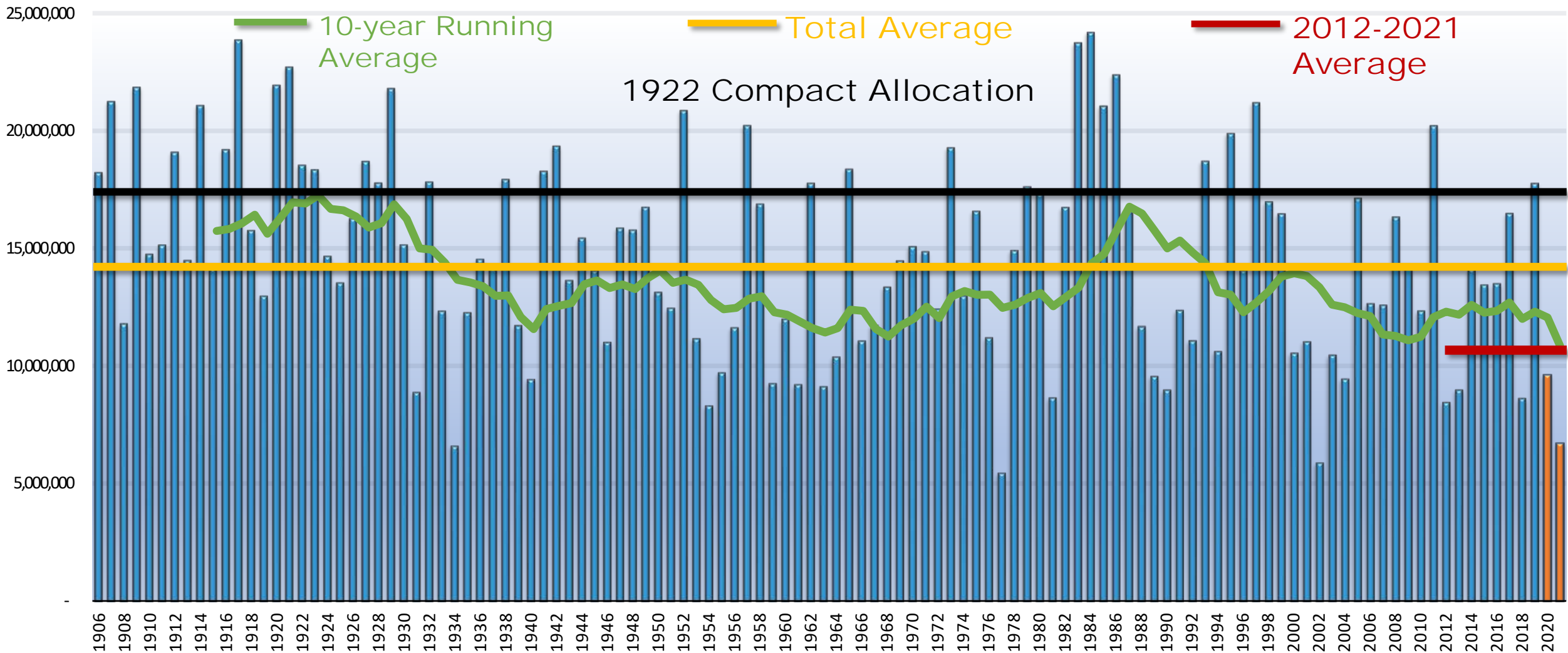


Source: Colorado State Demographer,
U.S. Census Bureau (2020)

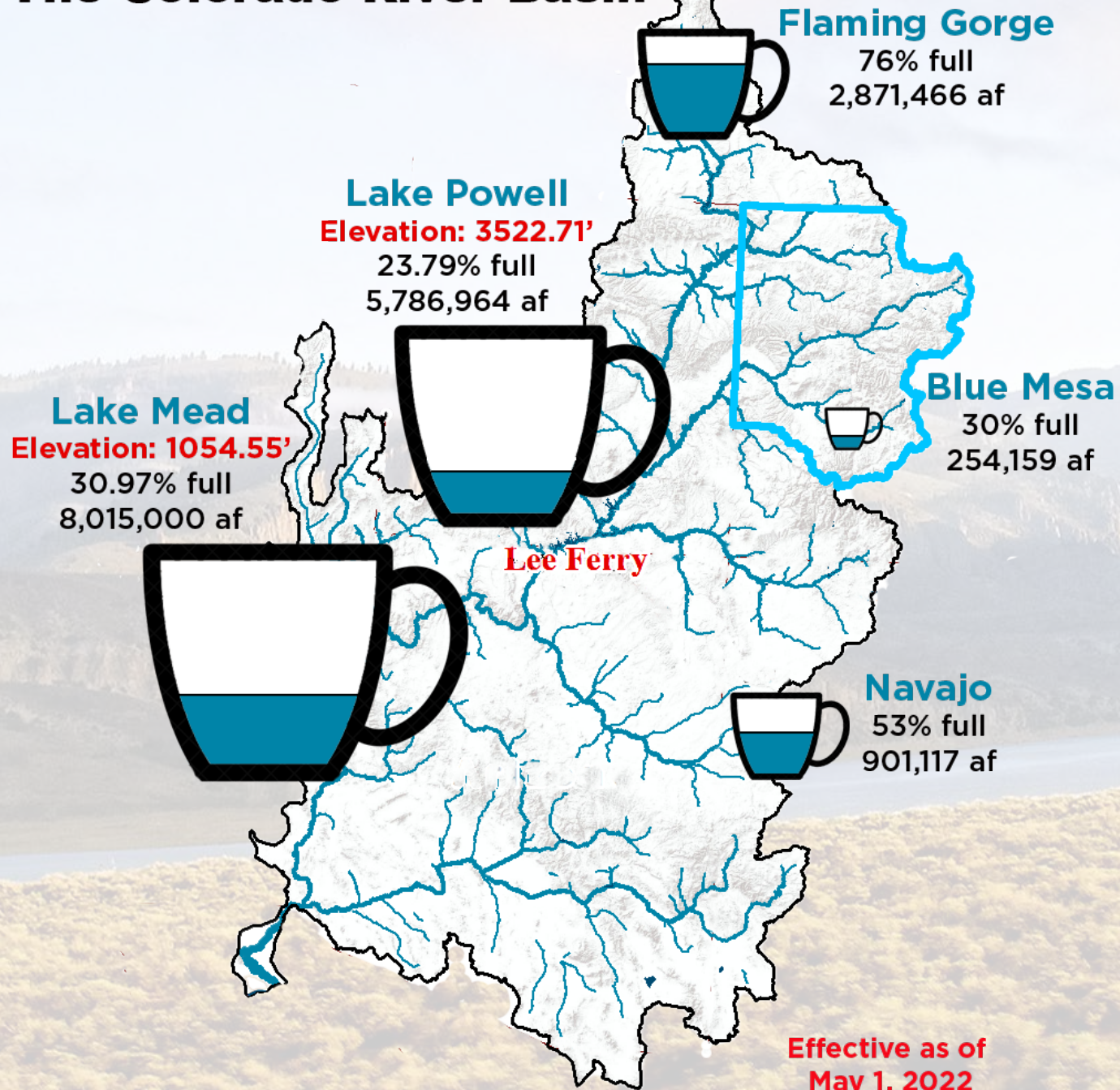
Colorado River Basin data from U.S. Bureau of Reclamation
Colorado River Basin Water Supply and Demand Study (2012)

Provisional Natural Flows for the Colorado River at Lee's Ferry (USGS gauge 09380000)

Water Years 1906-2021



The Colorado River Basin



22 years of drought in Colorado, rest of the Southwest is worst stretch in 1,200 years, study shows



Lake Powell is about to drop below a critical level never reached before, as drought rages on



Federal government announces first-ever water shortage in Lake Mead, Colorado River

BY ZACK BUDRYK - 08/16/21 05:03 PM EDT



408 COMMENTS

Water releases from an already low Blue Mesa Reservoir will prop up Lake Powell



Deliveries to be cut as Lake Powell approaches crisis level



Minimum Power Pool

3,490
FEET



Moving Forward

Interstate

- Interim Guidelines Renegotiation
- Federal Policy-Making

Across the Divide

- State Policy-Making
- Front Range Conservation Outreach

Western Slope

- Innovative Local Partnerships
- Infrastructure Funding
- Forest, Watershed, and Soil Health





SAVE THE DATE
Annual Water Seminar
9.16.22

COLORADO
RIVER DISTRICT

COLORADORIVERDISTRICT.ORG



Colorado River District



@ColoradoWater



ColoradoRiverDistrict