

An aerial photograph of Lake Powell, showing its iconic red sandstone cliffs and deep blue water. A speedboat is visible on the water, leaving a white wake. The image is partially covered by a semi-transparent circular overlay on the right side, which contains the title and speaker information. The background shows a lush green forest on the left and distant hills under a blue sky with some clouds.

Lake Powell & The Future of West Slope Water

Colorado River District

Lindsay DeFrates, PR and Media Specialist



**The Colorado River
District was formed in
1937 to protect West
Slope water users.**





West Slope

Interstate





1922 Colorado River Compact

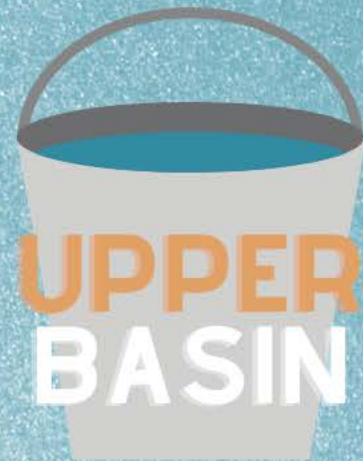


The Colorado River Basin



11.5 MILLION
ACRE FEET

Colorado River



UPPER
BASIN

4-4.5 MILLION
ACRE FEET



LOWER
BASIN

Actual Use

2007

**LAKE
MEAD**

**LAKE
POWELL**

**FLAMING
GORGE**

**BLUE
MESA**

NAVAJO

***INTERIM
GUIDELINES***

The Colorado River Basin



Flaming Gorge

77% full
2,935,703 af

Lake Powell

Elevation: 3522.94'

23.85% full
5,800,895 af



Lake Mead

Elevation: 1059.52'

32.41% full
8,386,732 af



Lee Ferry



Blue Mesa

29% full
242,611 af



Navajo

50% full
861,993 af

Effective as of
April 10, 2022



Multi-Decadal Drought Continues



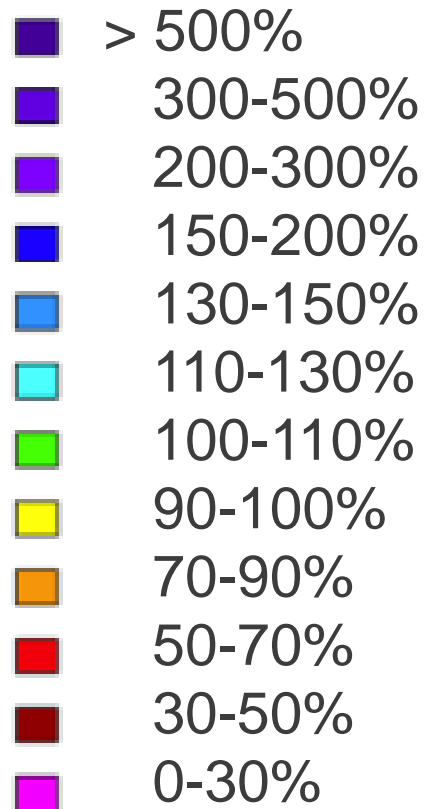
**For every 1 degree Fahrenheit
rise in temperature, streamflow
is reduced between 3% to 9%.**



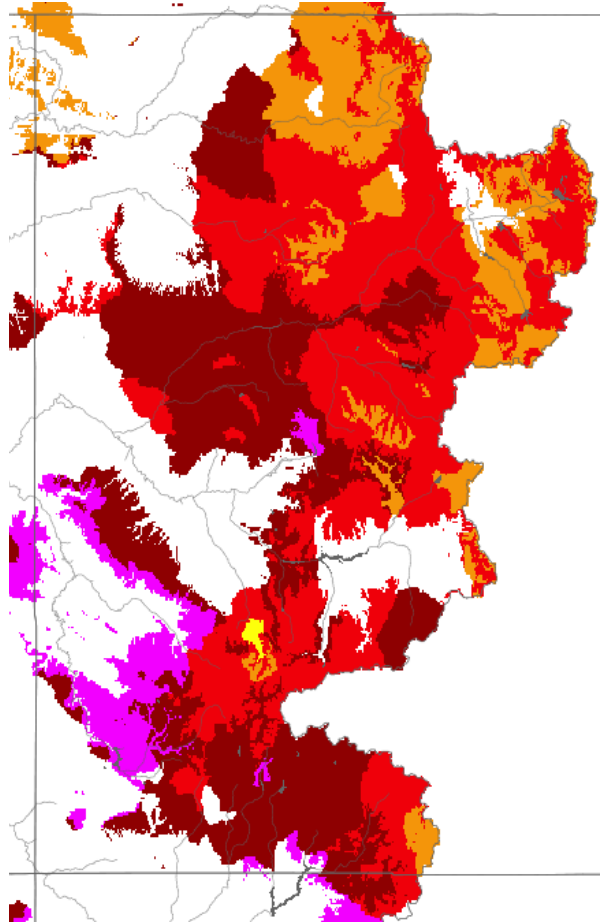
Data:
Changing climate drives future streamflow declines and challenges in meeting water demand across the southwestern United States
(Olivia L. Miller; et al, Journal of Hydrology, vol. 11, May, 2021)
Colorado River flow dwindles as warming-driven loss of reflective snow energizes evaporation (P. C. D. Milly, K. A. Dunne, Science 2020)

Soil Moisture

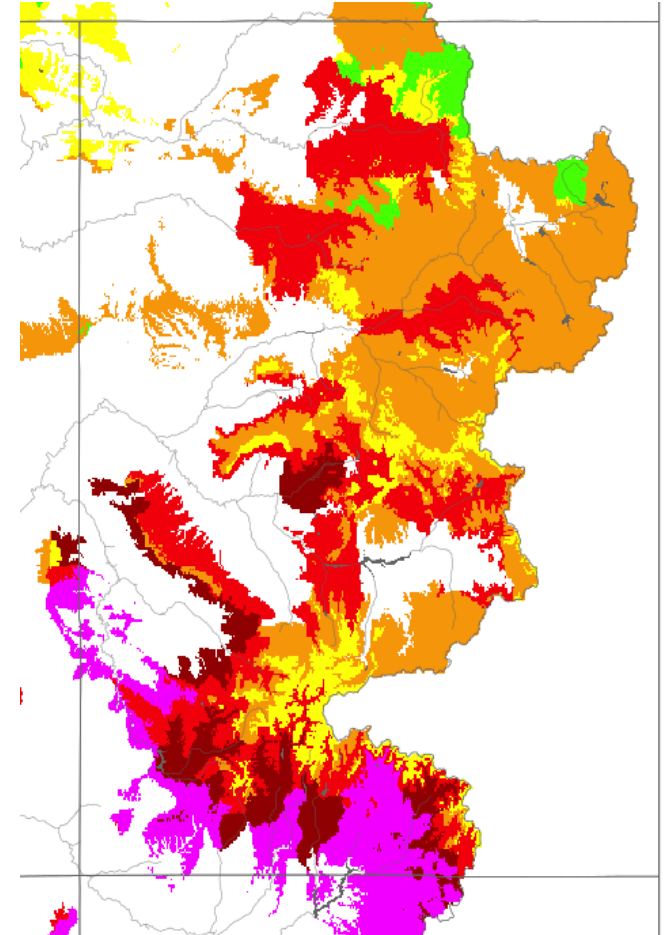
% of Average



November 15th, 2020



November 15th, 2021



Population Growth

State of Colorado: 9 million by 2050

Colorado River Basin: 76 million by 2060

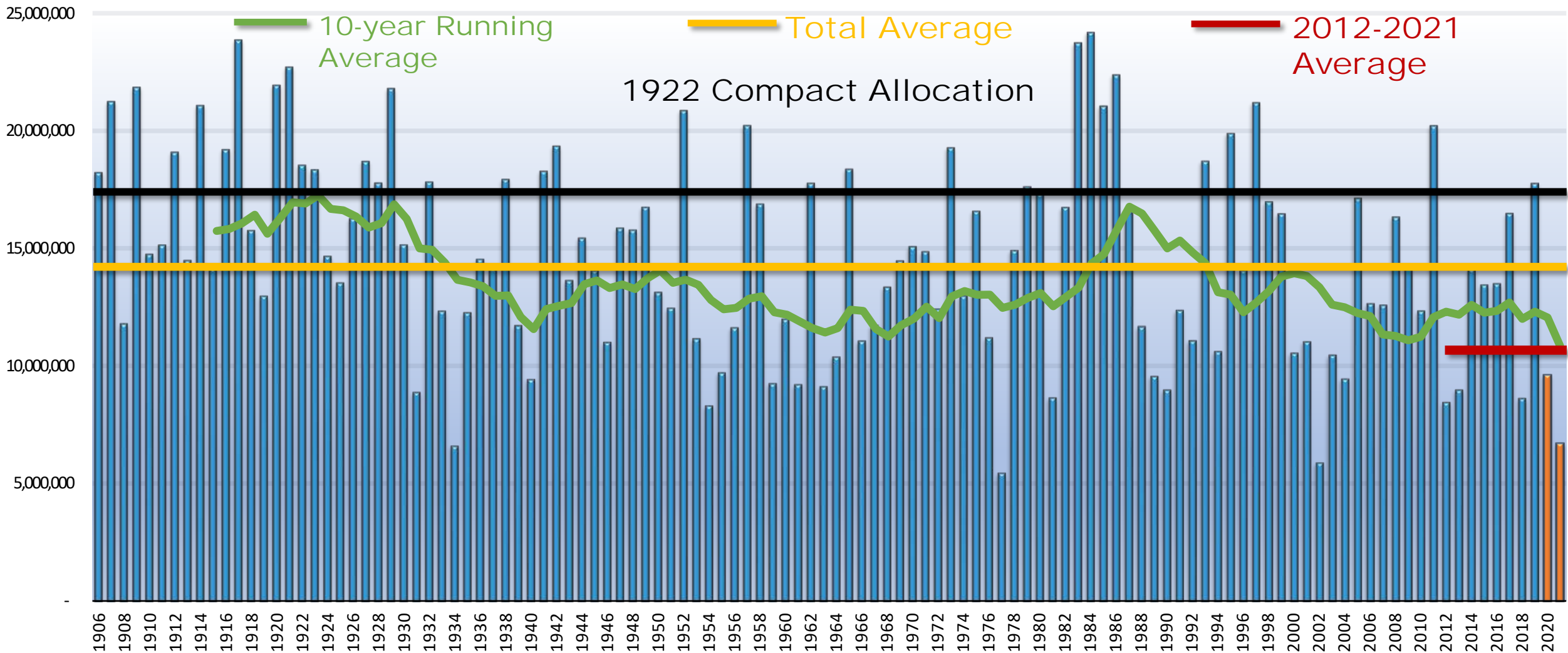


Source: Colorado State Demographer,
U.S. Census Bureau (2020)

Colorado River Basin data from U.S. Bureau of Reclamation
Colorado River Basin Water Supply and Demand Study (2012)

Provisional Natural Flows for the Colorado River at Lee's Ferry (USGS gauge 09380000)

Water Years 1906-2021



22 years of drought in Colorado, rest of the Southwest is worst stretch in 1,200 years, study shows

 The Colorado Sun

Lake Powell water level will fall below 'target elevation' of 3,525 feet

 St George News

Federal government announces first-ever water shortage in Lake Mead, Colorado River

BY ZACK BUDRYK - 08/16/21 05:03 PM EDT

THE HILL

Water releases from an already low Blue Mesa Reservoir up Lake Powell

THE

Colorado River states and feds are working on new plan to avoid another emergency water release to save Lake Powell

 CPR News



Minimum Power Pool

3,490
FEET



Moving Forward

Interstate

- Interim Guidelines Renegotiation
- Federal Policy-Making

Across the Divide

- State Policy-Making
- Front Range Conservation Outreach

Western Slope

- Innovative Local Partnerships
- Infrastructure Funding
- Forest, Watershed, and Soil Health





SAVE THE DATE
Annual Water Seminar
9.16.22

COLORADO
RIVER
DISTRICT

COLORADORIVERDISTRICT.ORG



Colorado River District



@ColoradoWater



ColoradoRiverDistrict