



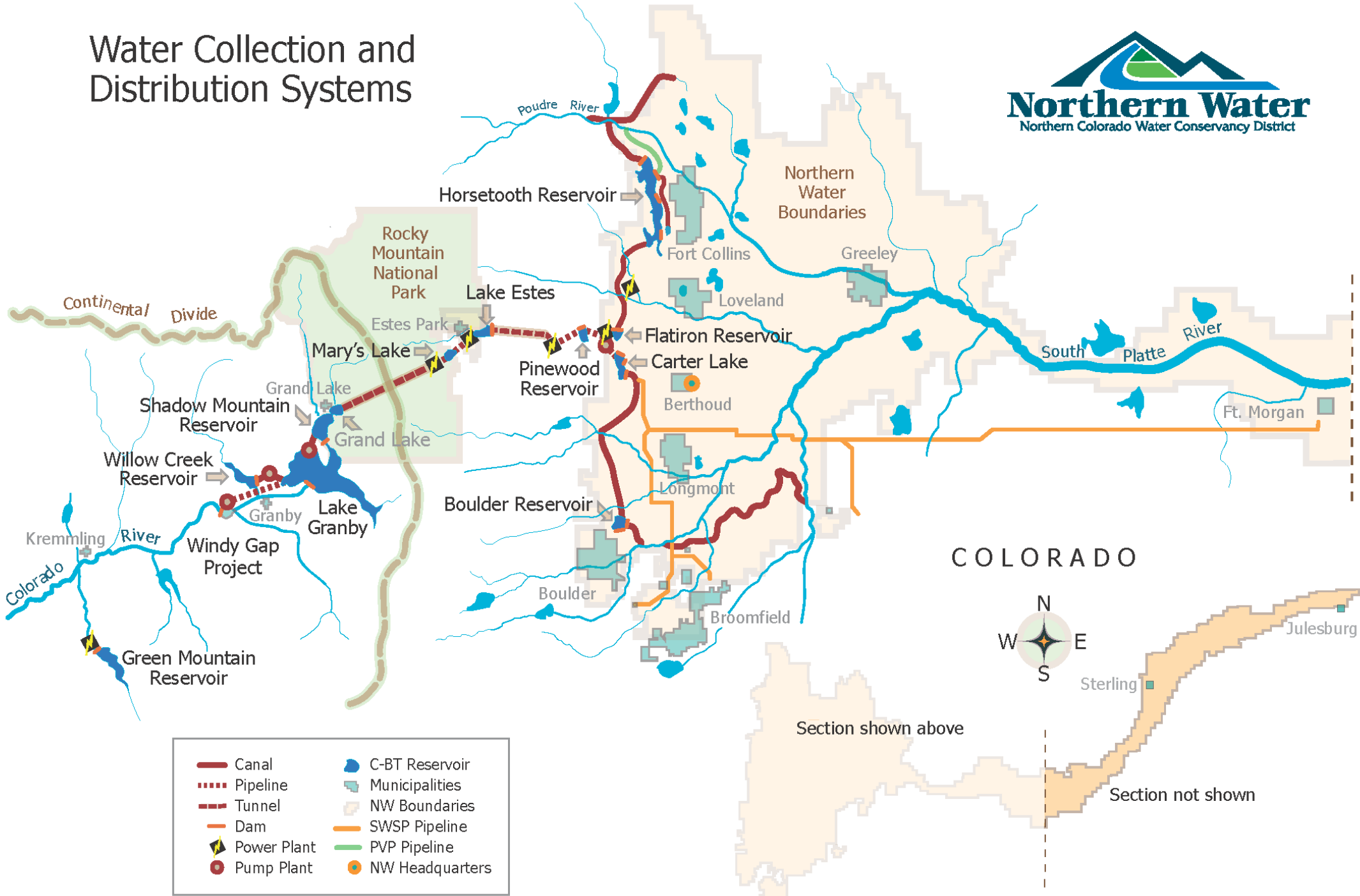
# Colorado State of the River

May 27, 2021

Kimberly Mihelich  
Source Water Protection Specialist  
Northern Water

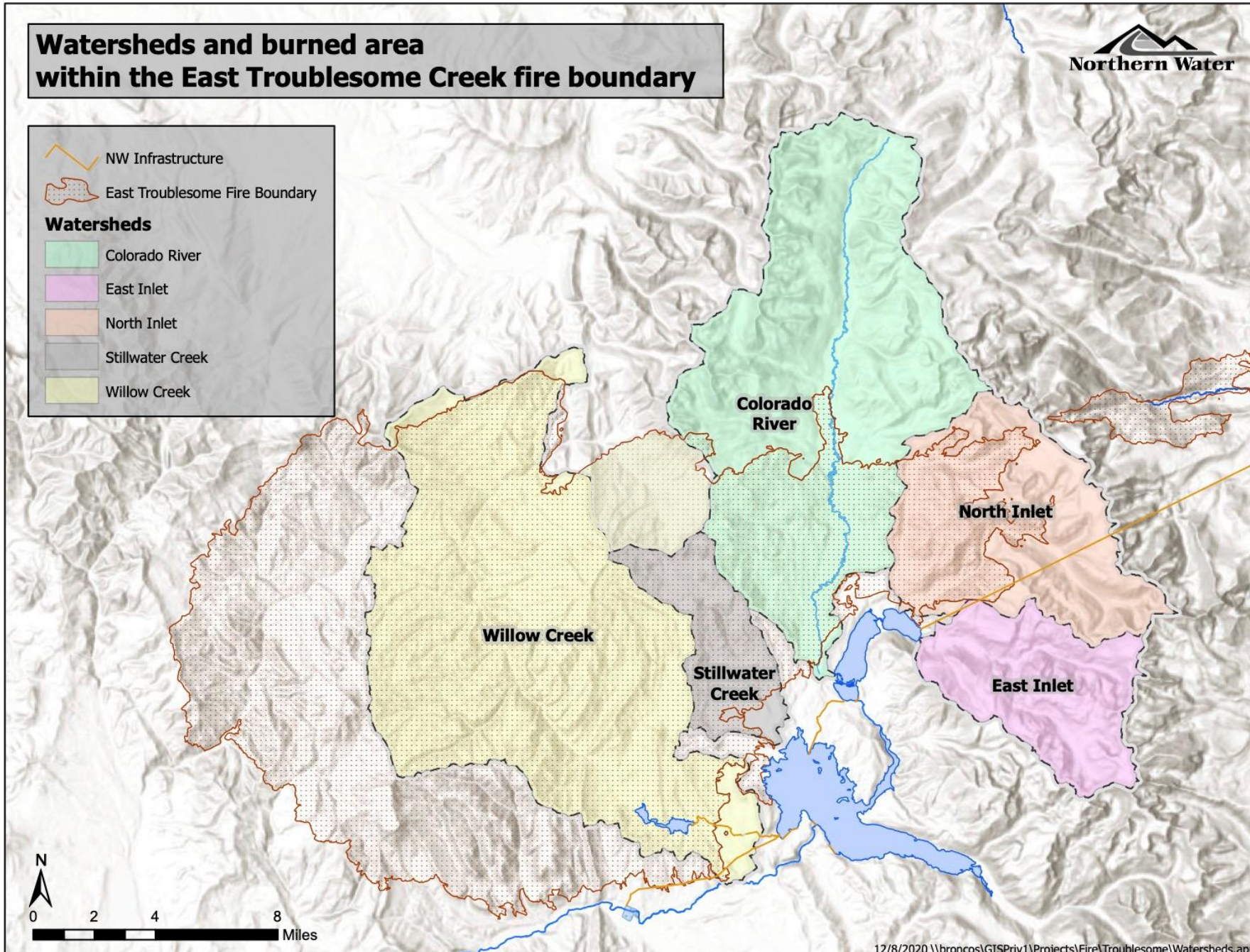
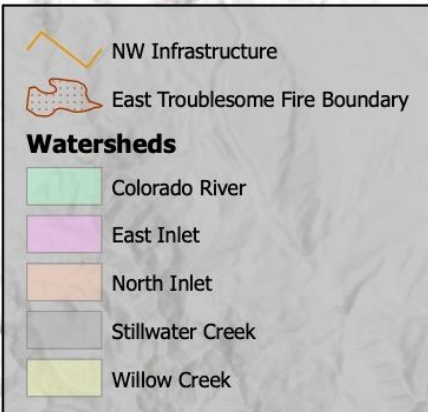


# Water Collection and Distribution Systems





# Watersheds and burned area within the East Troublesome Creek fire boundary



East Troublesome Fire Soil Burn Severity by Watershed

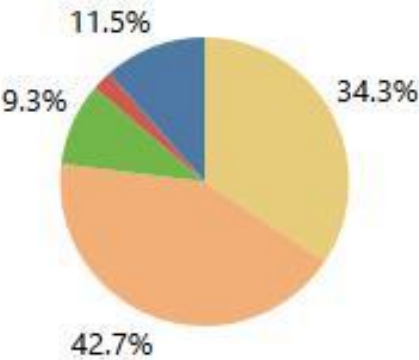
Name

Willow Creek

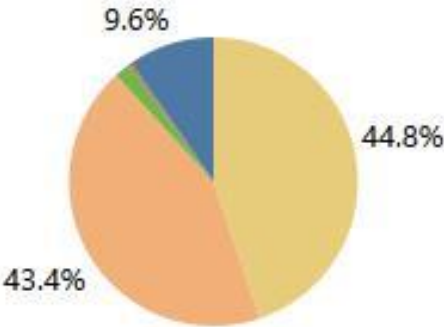
Stillwater Creek

Colorado River

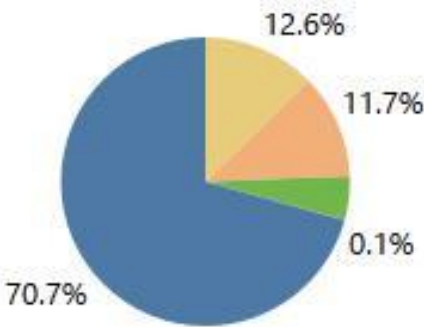
North Inlet



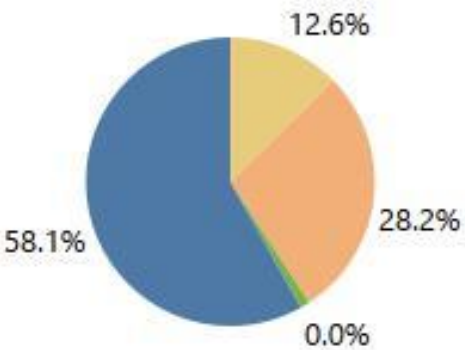
88% Burned  
80,162 ac



90% Burned  
10,150 ac



29% Burned  
19,014 ac



42% Burned  
12,279 ac

- Soil Burn Severity
- Low
  - Moderate
  - Unburned/Very Low
  - High
  - Outside of Burn Area

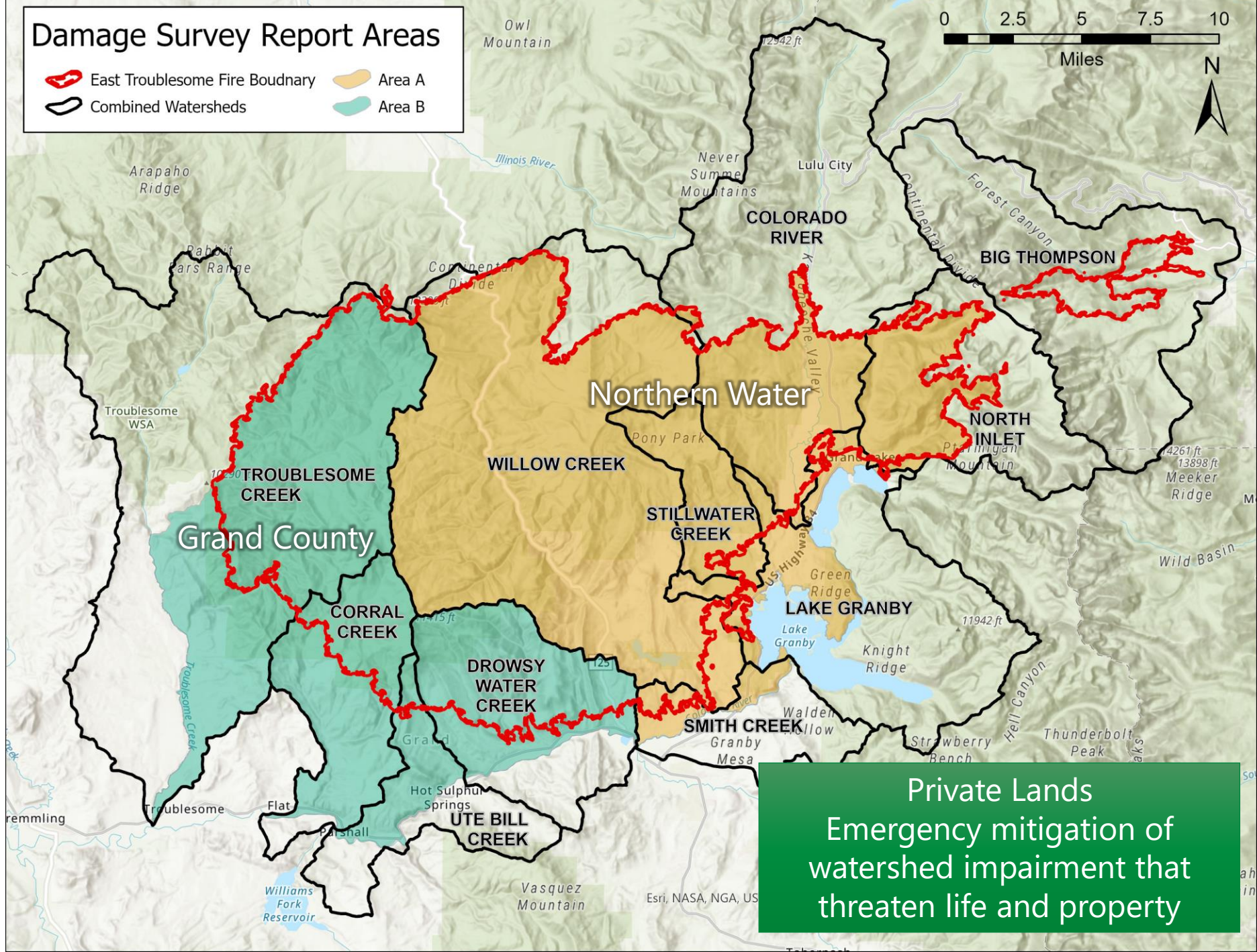
TOTAL BURNED  
113,041 ac



# NRCS Emergency Watershed Protection Program Sponsorship

## Partners

- Northern Water
- Grand County
- Three Lakes Watershed Association
- Middle Park Conservation District
- River District





# GCWatershedRecovery.com

