

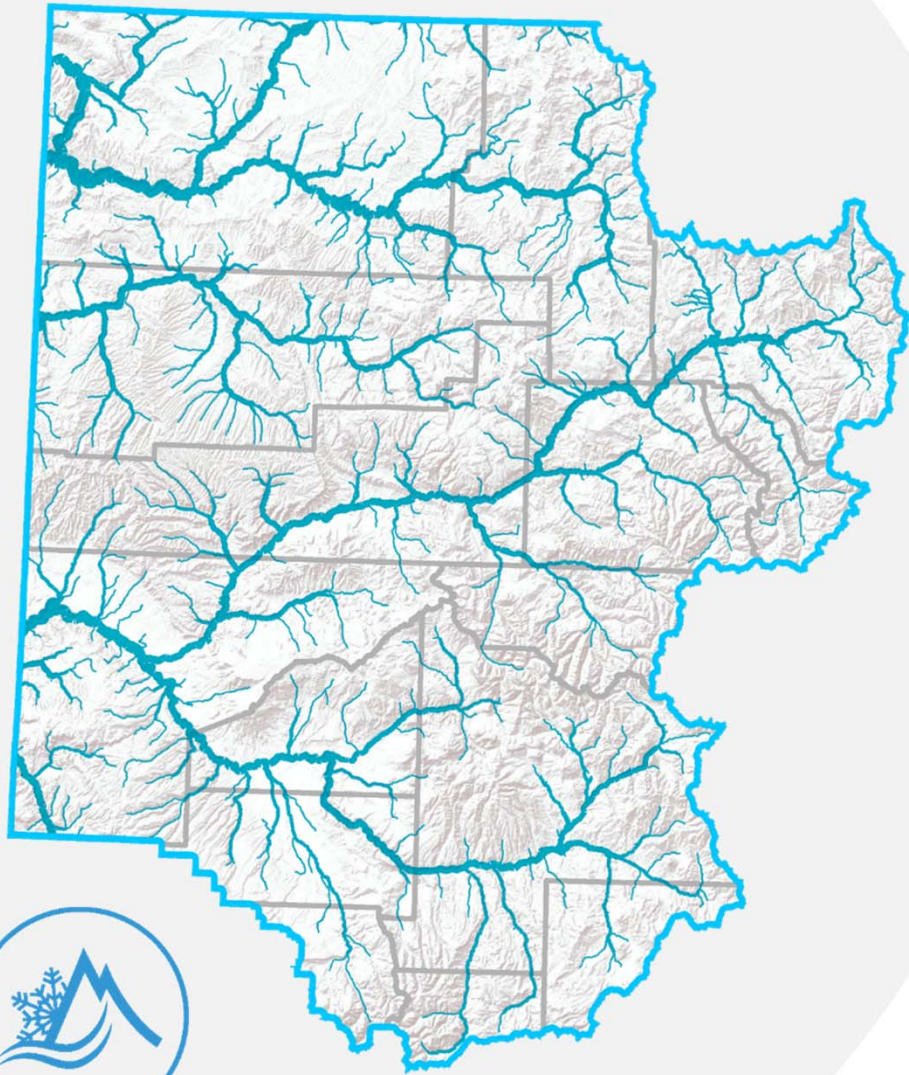
The Calls that Command the Colorado River

Jim Pokrandt
Director of Community Affairs
Colorado River District

Mark Harris
General Manager
Grand Valley Water Users Assoc.



COLORADO RIVER DISTRICT
PROTECTING WESTERN COLORADO WATER SINCE 1937



To lead in the
**protection,
conservation,
use, and
development**
of the water resources of
the Colorado River basin.



Why is it important?

- Colorado uses the Prior Appropriation System of water rights because water is scarce in the arid West. The priority system is a means of rationing water when river flows subside after spring runoff.
- Shoshone and Cameo hold the most senior, major water rights on the river.



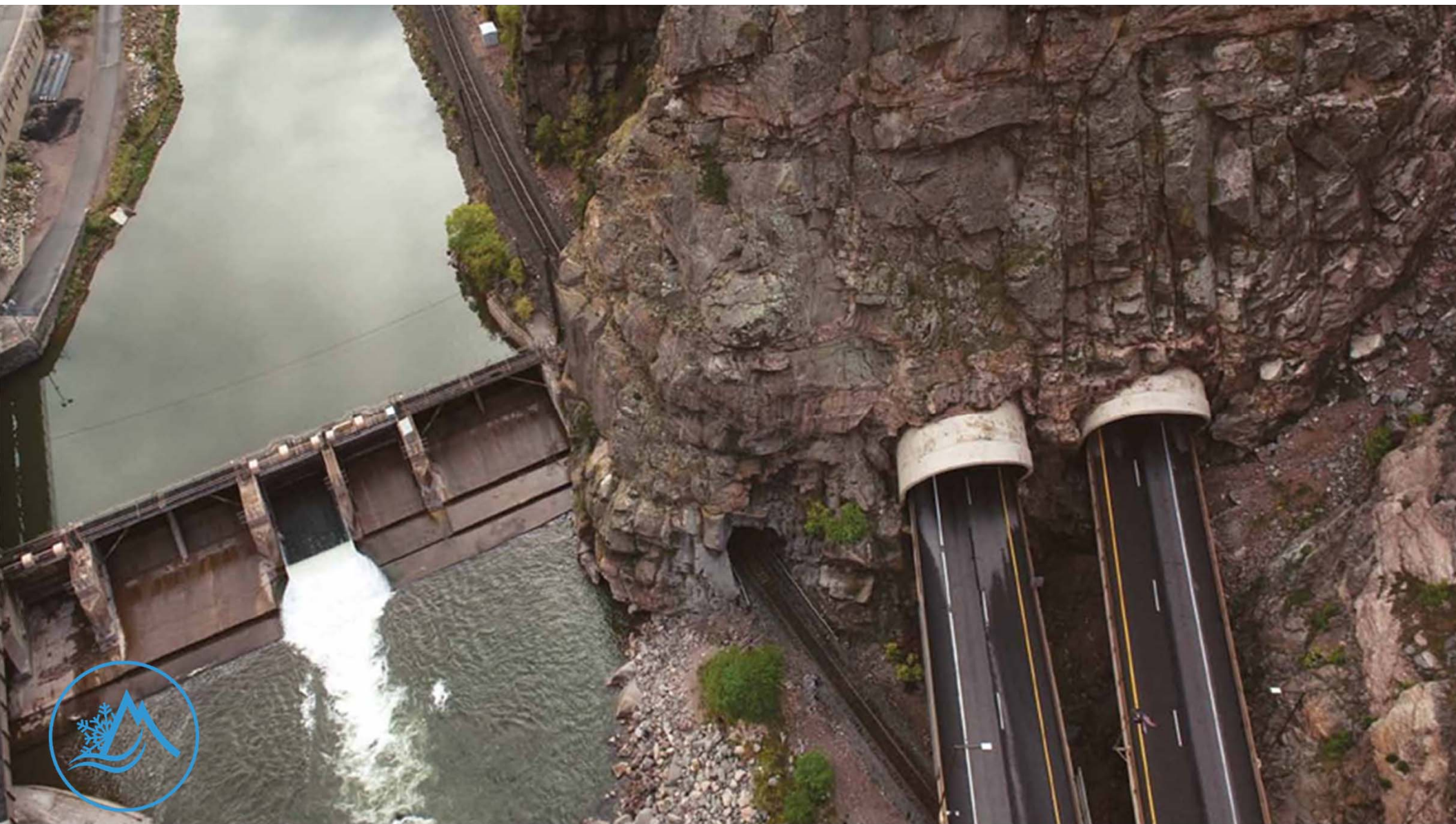
What is the Shoshone Hydropower Plant?

- 111-year-old powerplant on the banks of the Colorado River in Glenwood Canyon.
- The plant's oldest water rights date back to 1902, 1,250 cubic feet a second.
- Nonconsumptive - once it turns the turbines, nearly all the water is returned to the river.
- Though it still generates power, the plant is most valuable to the Western Slope for its water rights.

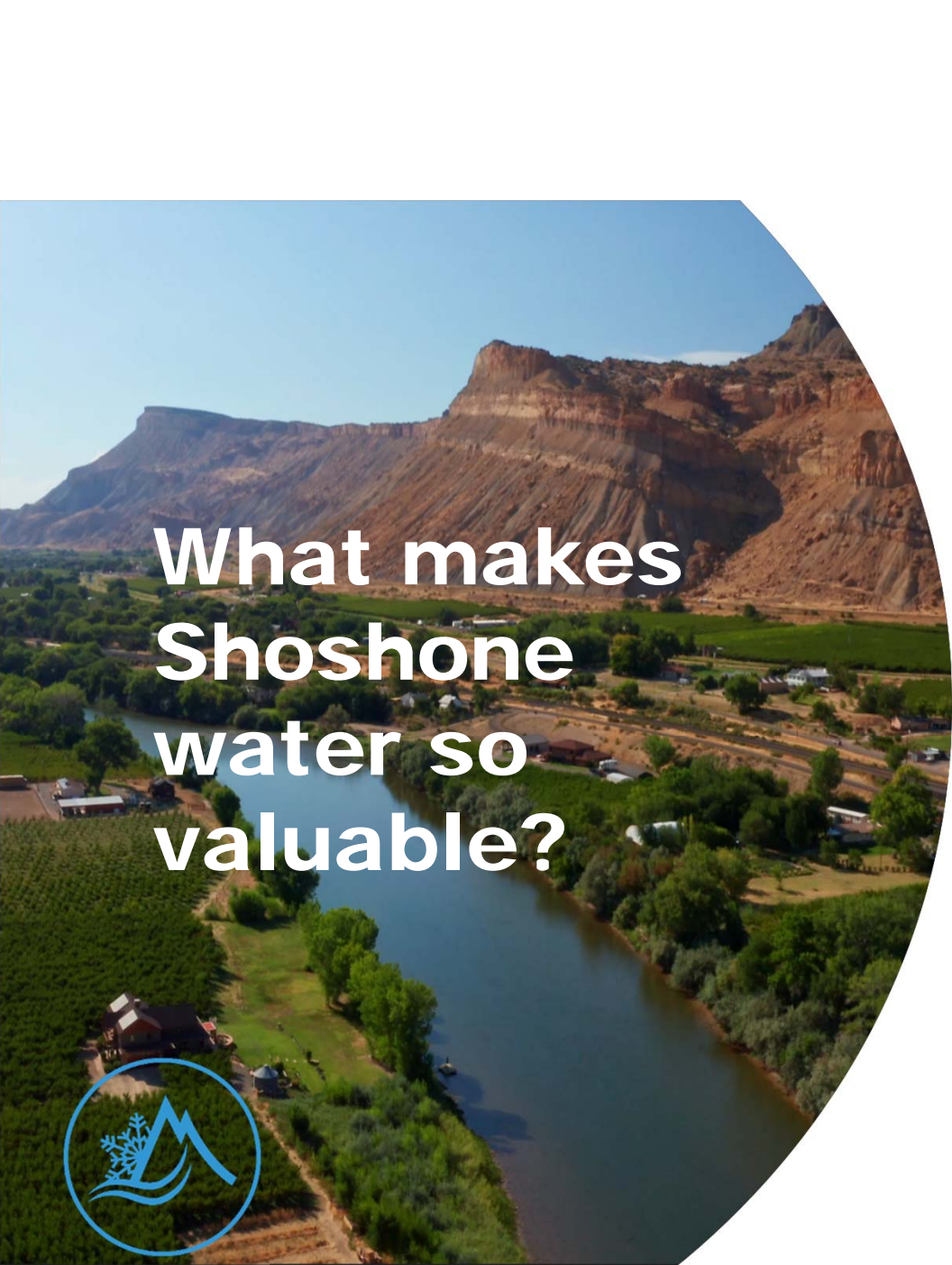










An aerial photograph of a river winding through a lush green valley. In the background, a large, rugged mountain with distinct horizontal rock layers rises against a clear blue sky. The river is surrounded by dense vegetation and some small buildings or structures along its banks.

What makes Shoshone water so valuable?

- Seniority of the Shoshone water right makes it valuable. The benefits of having that water commanded down the river make the water right even more valuable.
- If the Shoshone flows were not in the river, river levels would be lower and other users upstream could take out more water. The river, bolstered by Shoshone flows, supports a robust recreational economy from Grand County through Garfield County. Think rafters, kayakers and anglers, both commercial and private users.
- Shoshone flows enhance the environment because if they were not in place, flows would be lower in the river. This would also cause harm to western Colorado communities that draw drinking water. The lower the flows, the higher the concentration of pollutants and thus the higher the cost to treat the water.





What are policy-makers doing?

- Shoshone is privately owned and could be sold, making the future of these critical water rights uncertain.
- The Colorado Basin Roundtable and the Colorado Water Plan have identified protection of the Shoshone Plant as a priority.
- Shoshone Outage Protocol – A collaboration between 17 organizations to protect Shoshone flows.
- In talks with Xcel



What is the Cameo Call?

- The Cameo Call is a collection of water rights diverted at the Grand Valley Diversion Dam, known as the Roller Dam, and downstream at the Grand Valley Irrigation Co. diversion.
- Composed of a series of water rights on the Colorado River owned by five entities:
 - Grand Valley Irrigation Company
 - Orchard Mesa Irrigation District
 - Grand Valley Water Users Association
 - Palisade Irrigation District
 - Mesa County Irrigation District
- Operates only during the irrigation season.





Non-irrigated land to come under Govt Canal (Book Cliffs in background – Aug 7, 1910

Robust Grand Valley Agriculture

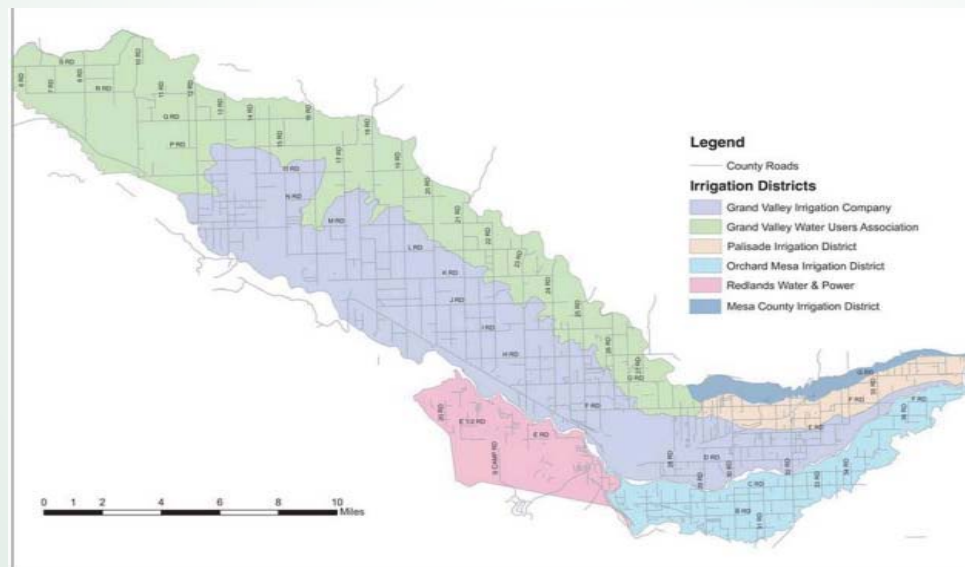


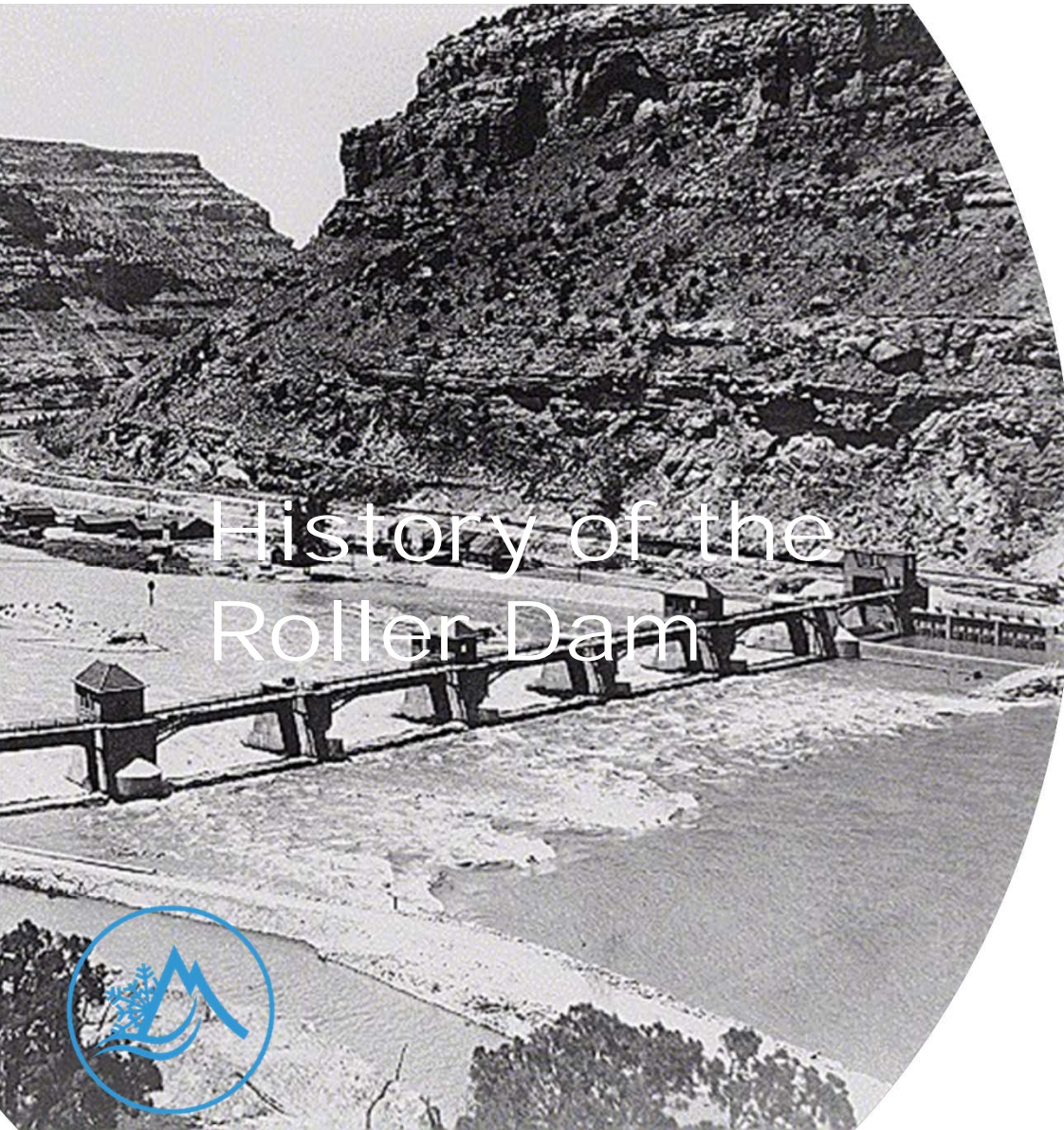


Introduction to the GVWUA

Grand Valley Water Users Association manages the water diversion for GVWUA, OMID, PID, MCID, and the Grand Valley Power Plant

- GVWUA has 1,700 accounts; thousands of customers
- 23,500 irrigated acres
- Other GVP approximately 15,000A





History of the Roller Dam

- Located on the Colorado River in Debeque Canyon.
- Among the largest of its type in the world, considered unique, and listed on the National Register of Historic Places.
- Design and construction amid World War I.
- A fish passage structure for endangered fish was constructed at the Dam on the Colorado River in January 1998.

Photo courtesy WaterArchives.org.

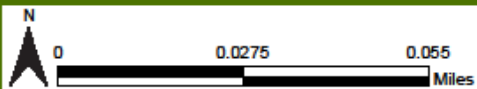


Construction Work
on Gov. Dam near

Photo by Jeffrey Beall



GVWUA Roller Dam

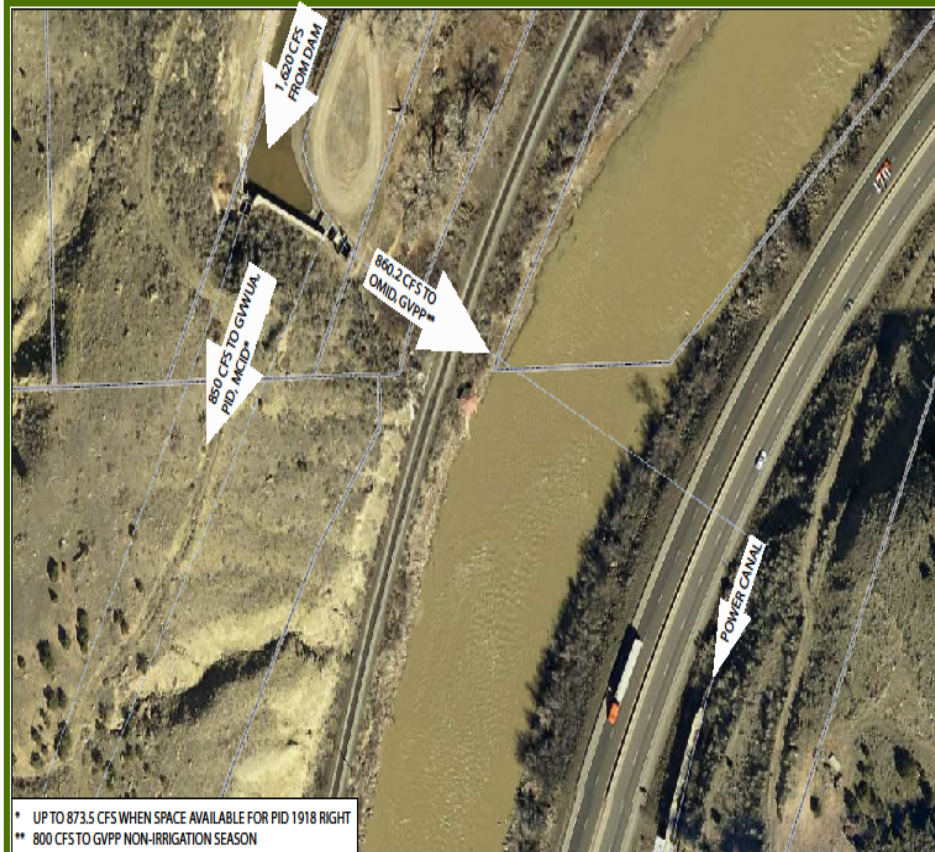


Printed: 4/1/2013

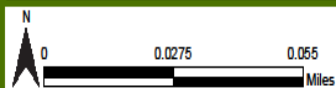
1 inch = 100 feet

2000-01
Grand Junction
COLORADO
ASSOCIATION OF WATER USERS

GVWUA OMID Siphon / Power Canal



* UP TO 873.5 CFS WHEN SPACE AVAILABLE FOR PID 1918 RIGHT
 ** 800 CFS TO GVPP NON-IRRIGATION SEASON

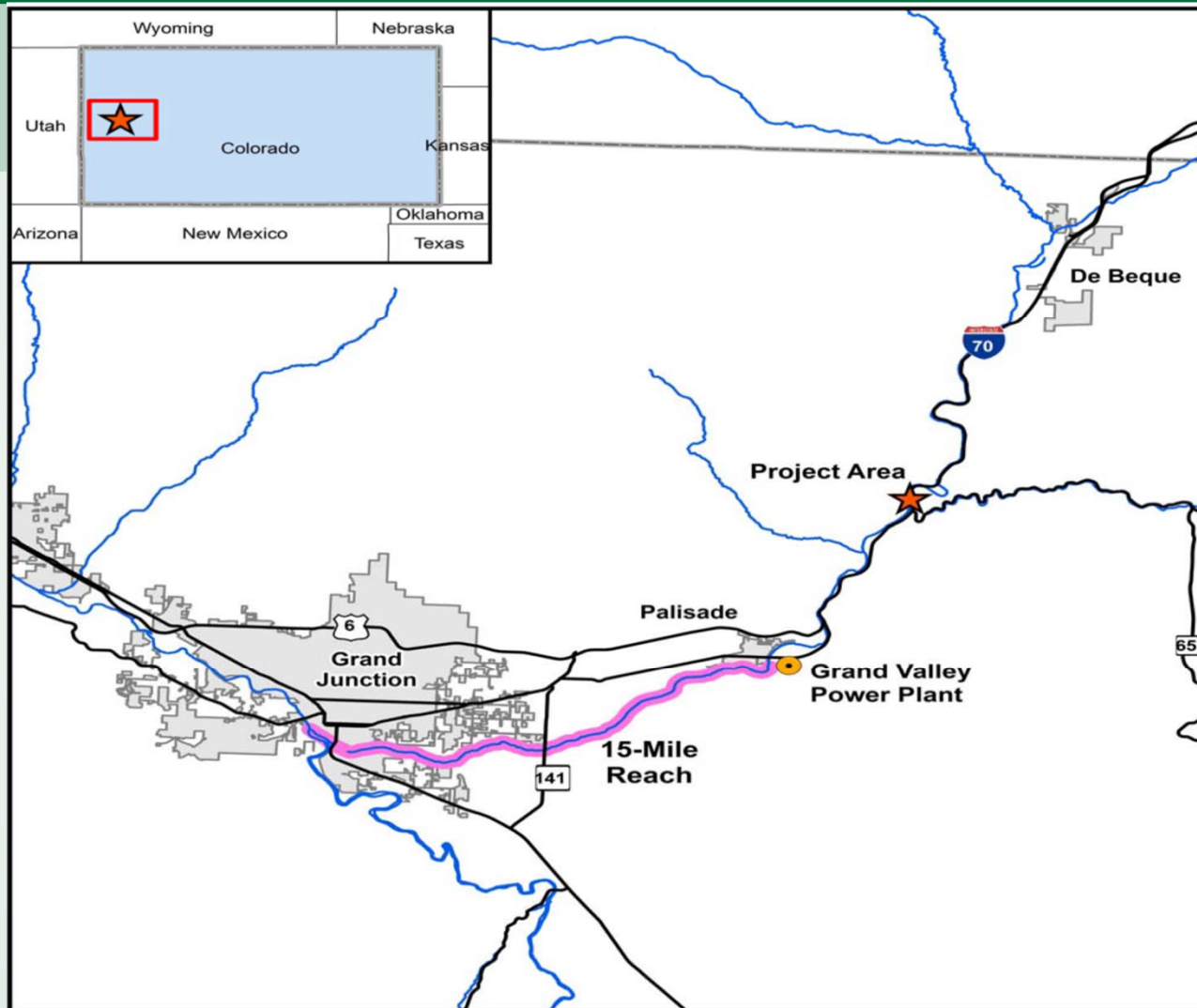


Printed: 4/1/2013

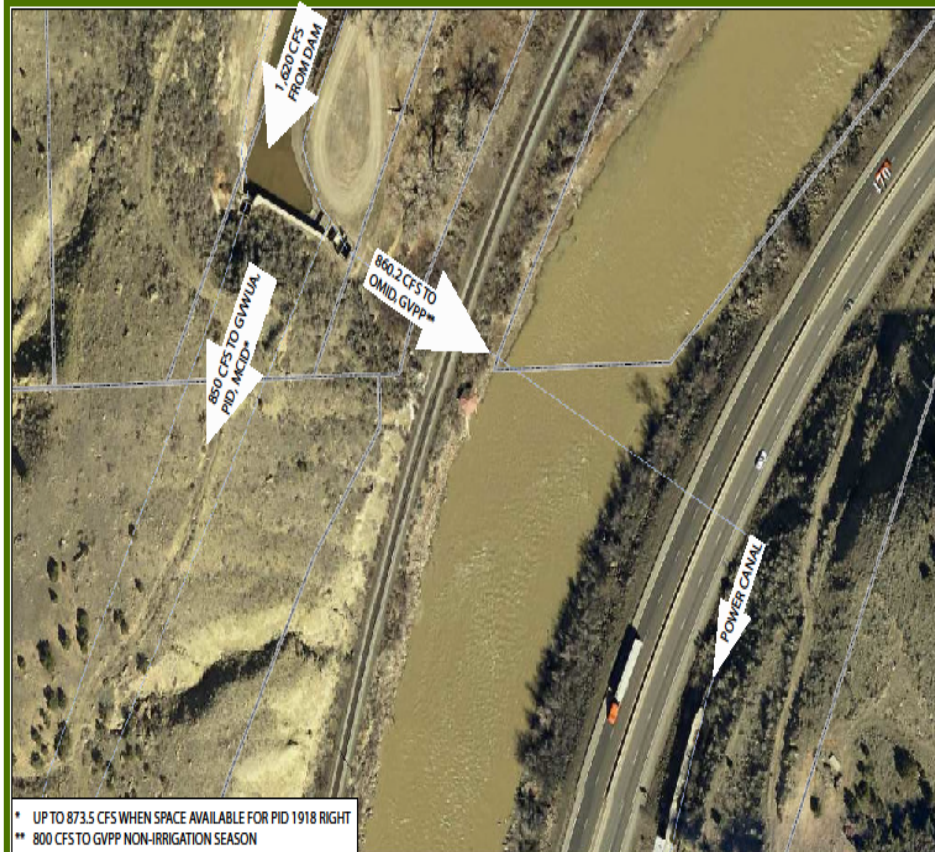
1 inch = 100 feet



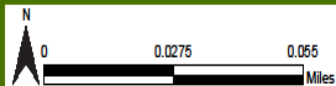




GVWUA OMID Siphon / Power Canal



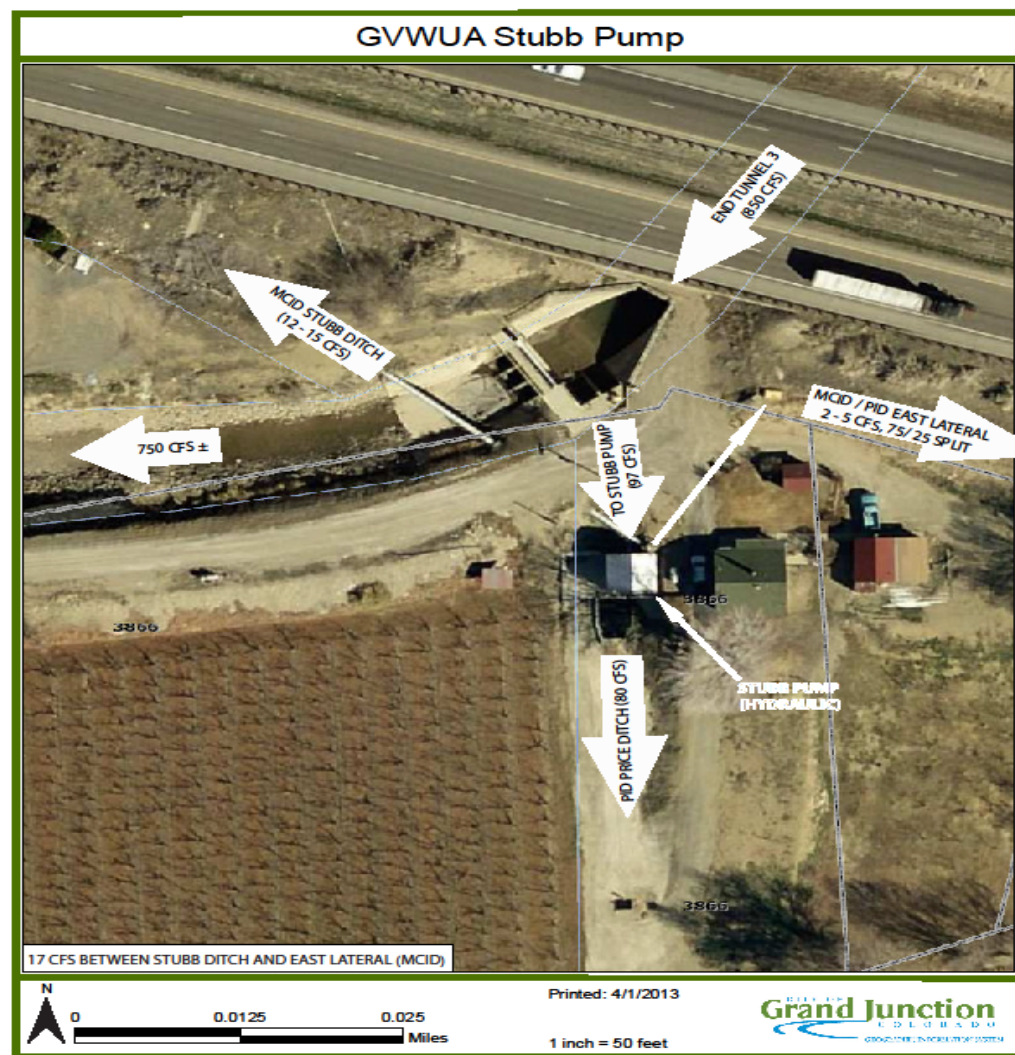
* UP TO 873.5 CFS WHEN SPACE AVAILABLE FOR PID 1918 RIGHT
** 800 CFS TO GVPP NON-IRRIGATION SEASON



Printed: 4/1/2013

1 inch = 100 feet

CITY OF
Grand Junction
COLORADO
www.grandjunctioncolorado.com





**Sustainable agriculture....
Vibrant and Sustainable Communities....
AND Healthy Rivers and Streams.....**

.....take it away Fay



COLORADORIVERDISTRICT.ORG



Colorado River District



@ColoradoWater



ColoradoRiverDistrict