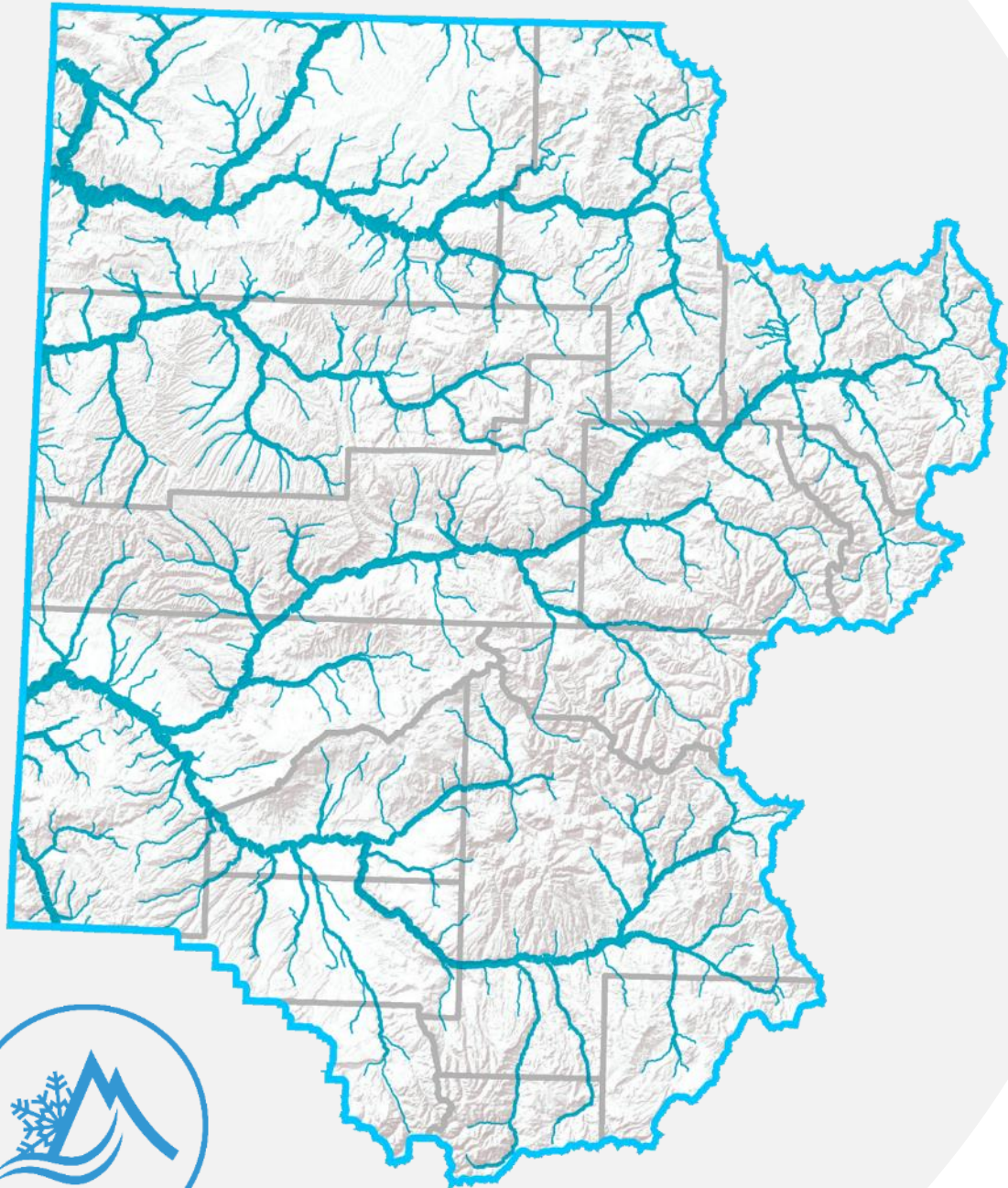


A conversation with the Colorado River District

General Manager Andy Mueller
Director of Government Relations Zane Kessler



COLORADO RIVER DISTRICT
PROTECTING WESTERN COLORADO WATER SINCE 1937



For more than 80 years, the Colorado River District has been working to safeguard West Slope water and keep your water on the Western Slope.



Colorado River Basin



Population Growth

State of Colorado: 9 million by 2050

Colorado River Basin: 70 million by 2060

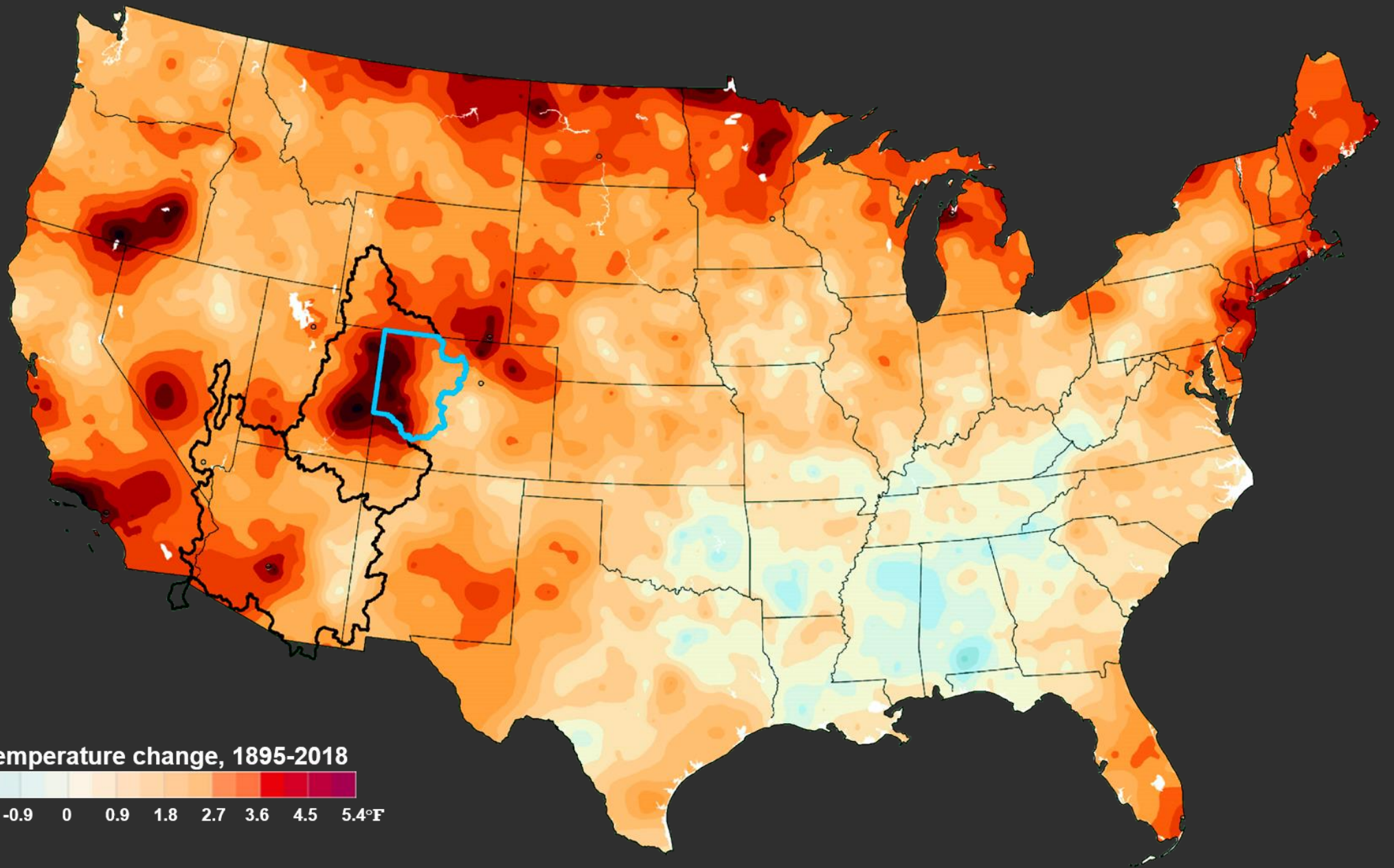


Colorado data from
Colorado Water Plan Technical Update (2016)
Photo courtesy Colorado Public Radio

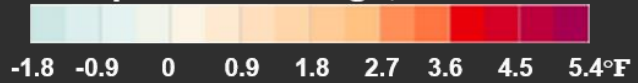
Colorado River Basin data from U.S. Bureau of Reclamation
Colorado River Basin Water Supply and Demand Study (2011)
Photo courtesy Visit Phoenix

**Annual lower basin overuse:
1.1 to 1.3 million acre feet**





Temperature change, 1895-2018



Temperature data generated by NOAA
Temperature graphic courtesy the Washington Post

A person in a white shirt and dark waders stands on a large rock in a river, casting a fishing line. The river flows over rocks, creating white water. The background is a dense forest of evergreen trees. The sky is a mix of orange, pink, and purple, indicating sunset or sunrise. A dog is visible on the right bank. The text "Rising to the Challenge." is overlaid in the center.

Rising to the Challenge.



A photograph of the Shoshone Hydropower plant, a large concrete structure with multiple windows and solar panels, situated in a canyon with steep rock walls and green vegetation. A road and a car are visible in the foreground.

Protecting flows for the Shoshone Hydropower plant

A photograph of a city street at night, showing a wide road with white lane markings, streetlights, and buildings with lit windows and storefronts under a dark blue sky.

Economics of demand management

A photograph of a deep, winding canyon with steep, layered rock walls and a river flowing through the bottom. The sky is blue with some clouds.

Colorado River Risk Study

A photograph of the Colorado State Capitol building, a large, ornate stone structure with a prominent dome and classical architectural details, set against a clear sky.

Advocating for West Slope water users



Financial challenges

Three key issues:

- **Declining tax revenue from the energy industry**
- **Revenue ratcheting down due to the Taxpayer's Bill of Rights**
- **The Gallagher Amendment's reduction in assessment rates**



Proposal under consideration:

**Annual increase of up to \$1.90
per \$100k of residential value.**





Productive agriculture



Conservation and efficiency



Healthy rivers



Watershed health and water quality



Infrastructure



COLORADORIVERDISTRICT.ORG



Colorado River District



@ColoradoWater



ColoradoRiverDistrict