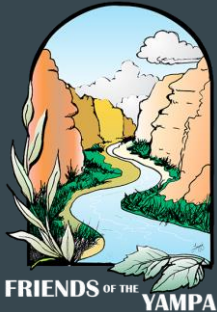


State of the River Recreation *Update*

Lindsey Marlow-Friends of the Yampa
Josh Veenstra-Good Vibes River Gear



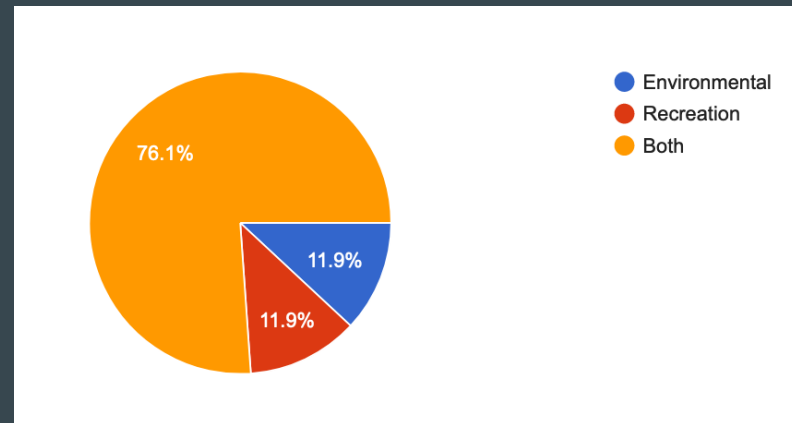
Integrated Water Management Plan:
Environmental and Recreation
outreach

Integrated Water Management Plan

- The Yampa White Green Basin Roundtable (YWG BRT) is leading the development of an Integrated Water Management Plan (IWMP) to identify actions to protect existing and future water uses and support healthy river ecosystems.
- We will combine this stakeholder input with science and engineering assessments that are happening now.
- The result, due in early 2022, will be a ranked list of issues that stakeholders want to tackle, as well as plans and funding options to implement priority actions that have benefits for multiple interests.

IWMP: Environmental and Recreational Outreach

- Environmental and Recreation Outreach to 22 Stakeholder groups
- 67 questionnaires completed to identify environmental and recreational needs and problem areas.
 - Data is still being analyzed but we do know...
 - Groups and people can represent more than one segment



2020 Recreation and COVID-19 Impacts



Little Yampa Canyon

Cancellation or changes to our recreation events and camp.

Reaching out to the recreational operators/businesses out of the Upper, Middle and Elk River Segments:

- Negative turned into record setting years
- Issues with running out of inventory
- Non-group commercial recreation increased
- Personal float trips increased
- Use of several sections of the river increased by large amounts.



Friends of the Yampa and Future Recreation Plans

- **Usable access points:** including trailer parking, anticipating recreational growth on the river and planning how to mitigate impact. Ensure proper use of access points.
- Working on **stakeholder relationships**
- **Connect the youth** via river camps/floats and outreach in all socioeconomic status and all segments of the river
- FOTY is developing outreach videos to teach:
 - **Tubing etiquette** generalized for up and downriver
 - **River Etiquette:** How to be a respectful boater, respecting private land, be responsible, and respect other users.



Little Yampa Canyon Overview

River Mileage:

South Beach to Antlers=7.6 miles

Antlers to Friends=6.9 miles

Friends to Railroad=0.3 miles

Railroad to Bubba's Beach=10.7 miles

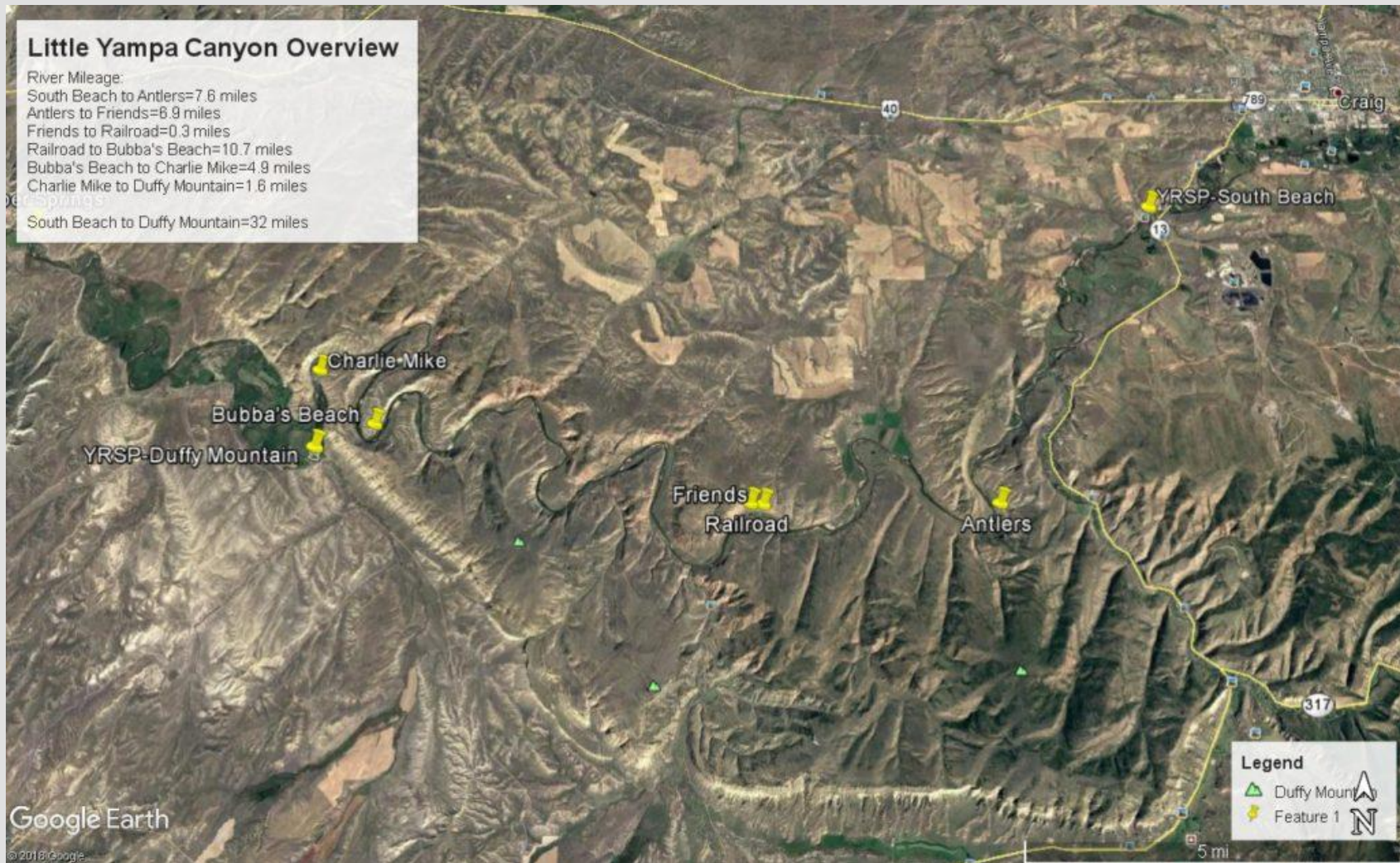
Bubba's Beach to Charlie Mike=4.9 miles

Charlie Mike to Duffy Mountain=1.6 miles

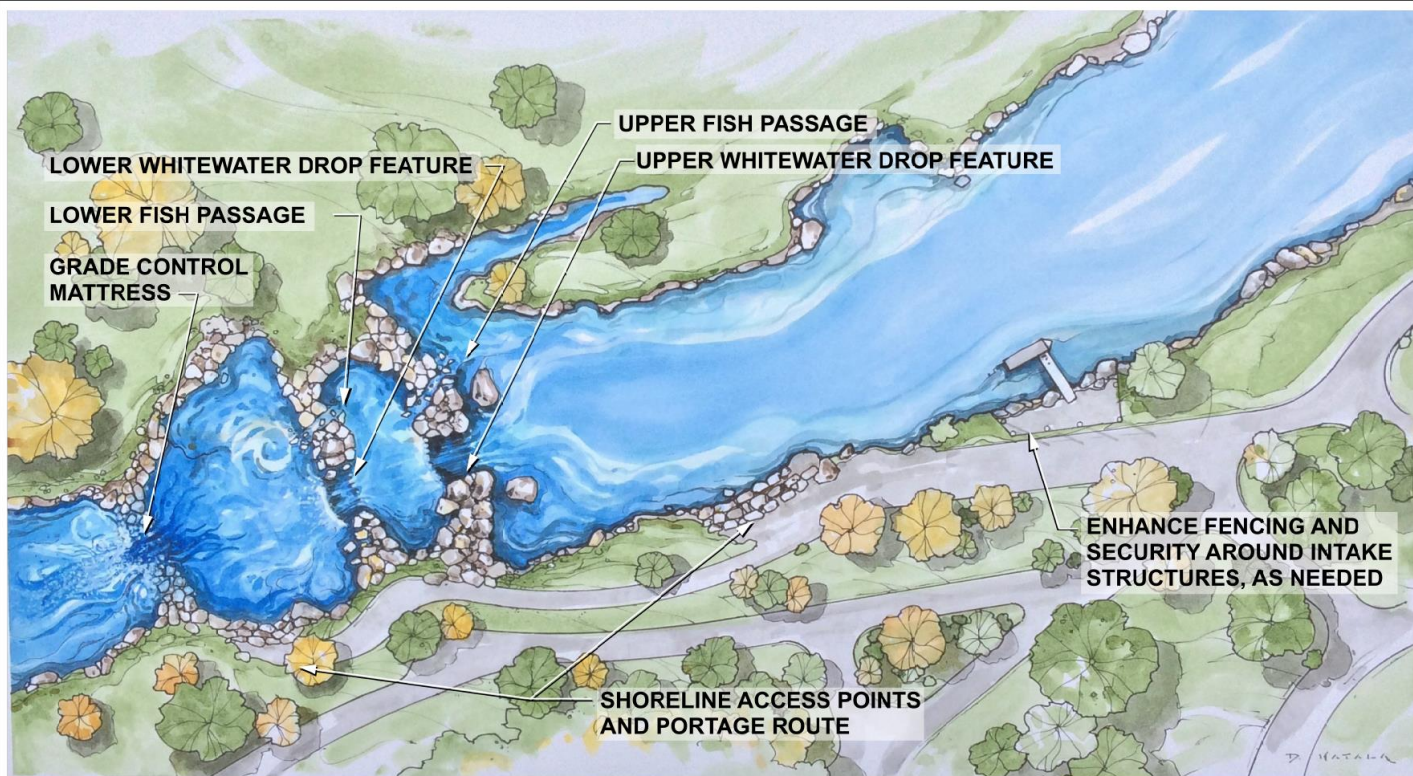
South Beach to Duffy Mountain=32 miles

Google Earth

© 2018 Google



Craig-Yampa River Corridor Project



- Diversion Whitewater park
- Recreation path connecting Loudy to Diversion Park
- Day use amenities at put-ins and take-outs
- New boat ramp at Loudy Simpson
- Improvement of collapsing retaining wall



RIVERWISE ENGINEERING, LLC
PO BOX 706
DURANGO, CO 81301
WWW.RIVERWISE.ORG
INFO@RIVERWISE.ORG
303.808.7734

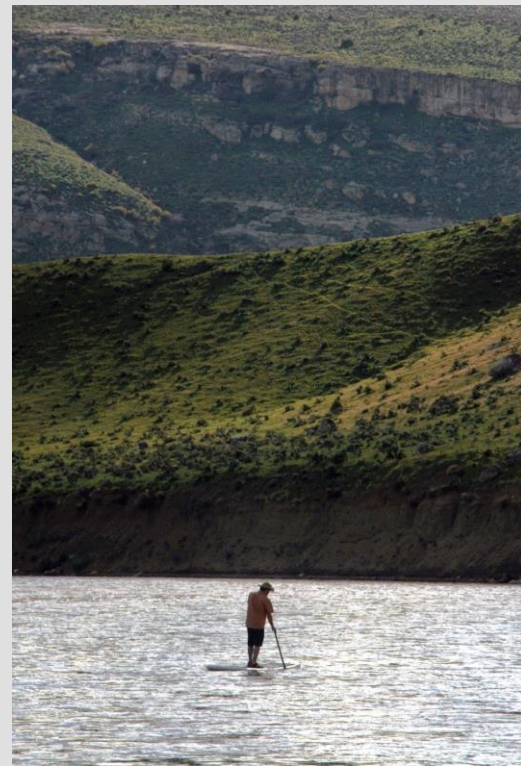
CRAIG DIVERSION PARK STRUCTURE
IMPROVEMENTS
YAMPA RIVER, MOFFAT COUNTY
CITY OF CRAIG, COLORADO

DESIGNED BY: KB	DATE: DEC. 5, 2016
DRAWN BY: AKTS	
REVIEWED BY: SS	
SUBMITTED BY: RIVERWISE ENGINEERING, LLC	FILE: CRAIG STRUCTURES.DWG

CLIENT:
NORTHWEST COLORADO
CHAPTER OF THE PARROTHEADS
P.O. BOX 1536
CRAIG, CO 81626

SHEET
REFERENCE:
C
SHEET 1 of 1

Little Yampa Canyon



Juniper Canyon



Cross Mountain Canyon



Planning for recreation in the future: recreation and the Yampa River are economic drivers of the Valley. Importance of sustainable use by all stakeholders and working together towards a plan.

Diversion Assessment



Kent Ventrees

To identify multi-purpose project opportunities

Diversions assessed



Segment				
Upper	Middle	Lower	Elk	All
13	7	15	9	45

